



Full Day Kindergarten Update

September 13th, 2022





BOND SALE UPDATE

Series 2022 Referendum Bonds - \$56.045M



Significant Dates	Series 2022
Sale Date	August 30, 2022
Dated & Delivery Date	September 22, 2022
First Interest Payment Date	June 15, 2023
Final Principal & Interest Payment Date	September 15, 2042

- Competitive bond sale
- 6 Bids Received
- Lowest 4 bids were 0.06% apart in interest costs

Statistics	Series 2022
All-in True Interest Cost (including costs of issuance)	3.825312%
Par Amount of Bonds	\$56,045,000.00
Plus: Net Premium	\$4,885,257.15
Less: Costs of Issuance	(\$369,807.15)
Less: Underwriter's Discount	(\$560,450.00)
Total Proceeds for Projects	\$60,000,000.00
Total Debt Service	\$86,744,134.17

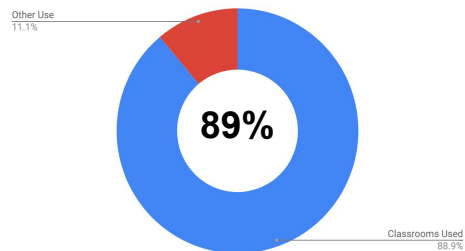


CLASSROOM INFORMATION

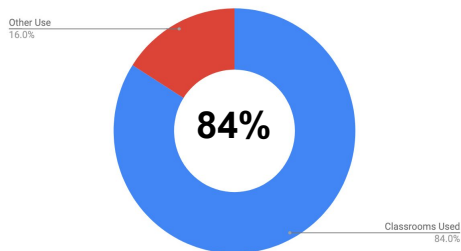
Preliminary Classroom Usage SY 2024-25



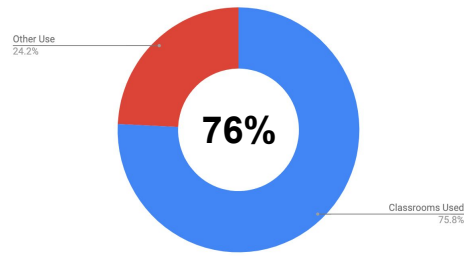
Dryden



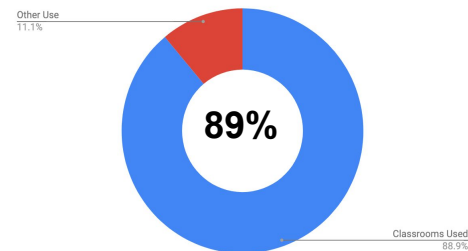
Greenbrier



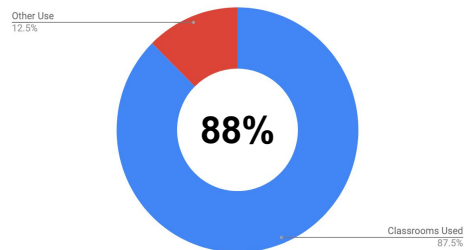
Ivy



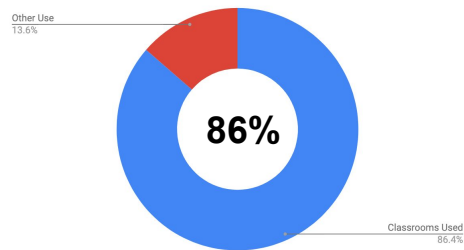
Olive



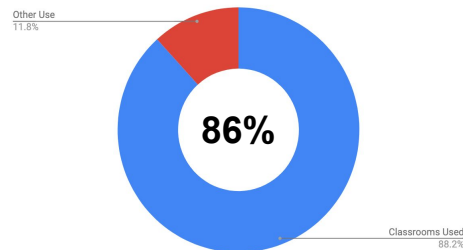
Patton



Westgate



Windsor



Preliminary Classroom Table '24-25



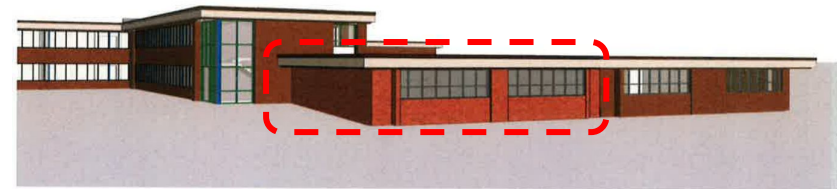
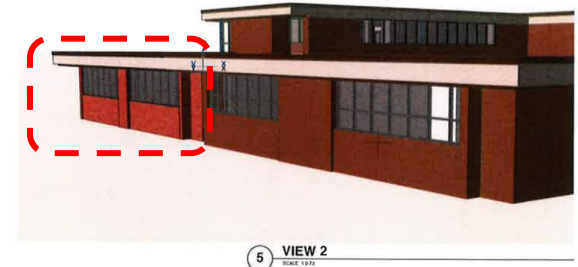
Draft 2024 Building Classroom Usage														
Drayden		Greenbrier		Ivy		Olive		Patton		Westgate		Windsor		
Type	Grade Level or Use	Type	Grade Level or Use	Type	Grade Level or Use	Type	Grade Level or Use	Type	Grade Level or Use	Type	Grade Level or Use	Type	Grade Level or Use	
Classroom	1	Classroom	1	Classroom	1	Classroom	1	Classroom	1	Classroom	1	Classroom	1	
Classroom	1	Classroom	1	Classroom	1	Classroom	1	Classroom	1	Classroom	1	Classroom	1	
Classroom	1	Classroom	1	Classroom	1	Classroom	1	Classroom	1	Classroom	1	Classroom	1	
Classroom	2	Classroom	2	Classroom	1	Classroom	1	Classroom	1	Classroom	1	Classroom	1	
Classroom	2	Classroom	2	Classroom	2	Classroom	1	Classroom	2	Classroom	1	Classroom	2	
Classroom	2	Classroom	3	Classroom	2	Classroom	2	Classroom	2	Classroom	2	Classroom	2	
Classroom	3	Classroom	3	Classroom	2	Classroom	2	Classroom	2	Classroom	2	Classroom	2	
Classroom	3	Classroom	3	Classroom	2	Classroom	2	Classroom	2	Classroom	2	Classroom	2	
Classroom	3	Classroom	4	Classroom	3	Classroom	2	Classroom	3	Classroom	2	Classroom	3	
Classroom	3	Classroom	4	Classroom	3	Classroom	2	Classroom	3	Classroom	2	Classroom	3	
Classroom	4	Classroom	4	Classroom	3	Classroom	2	Classroom	3	Classroom	2	Classroom	3	
Classroom	4	Classroom	5	Classroom	3	Classroom	3	Classroom	4	Classroom	3	Classroom	3	
Classroom	4	Classroom	5	Classroom	4	Classroom	3	Classroom	4	Classroom	3	Classroom	4	
Classroom	4	Classroom	0 EC	Classroom	4	Classroom	3	Classroom	4	Classroom	3	Classroom	4	
Classroom	5	Classroom	0 EC	Classroom	4	Classroom	3	Classroom	5	Classroom	3	Classroom	4	
Classroom	5	Classroom	0 EC	Classroom	4	Classroom	3	Classroom	5	Classroom	3	Classroom	4	
Classroom	5	Classroom	0 EC	Classroom	5	Classroom	4	Classroom	5	Classroom	4	Classroom	5	
Classroom	5	Classroom	0 EC	Classroom	5	Classroom	4	Classroom	0 K	Classroom	4	Classroom	5	
Classroom	1/2	Classroom	0 EC	Classroom	5	Classroom	4	Classroom	Intervention	Classroom	4	Classroom	5	
Classroom	1/2	Classroom	0 K	Classroom	5	Classroom	4	Classroom	Open	Classroom	4	Classroom	0 K	
Classroom	0 K	Classroom	EC - TAs	Classroom	5	Classroom	4	Classroom	Resource	Classroom	4	Classroom	0 K	
Classroom	Intervention	Classroom	LMC	Classroom	0 K	Classroom	5	Classroom	0 K	Classroom	5	Classroom	Instructional 1/23	
Classroom	Resource	Classroom	Resource	Classroom	0 K	Classroom	5	Classroom	0 K	Classroom	5	Classroom	Instructional 1/23	
Classroom	SLC	Classroom	0 K	Classroom	0 K	Classroom	5	Classroom	0 K	Classroom	5	Classroom	Instructional 1/23	
Classroom	0 K	Classroom		Classroom	0 K	Classroom	5	24		Classroom	5	Classroom	Instructional 1/23	
Classroom	0 K	25		Classroom	Math Interv.	Classroom	5	Classrooms Used		21	Classroom	0 K	Classroom	Instructional 1/23
Classroom	0 K	Classrooms Used		21	Classroom	ML	Classroom	0 K	88%		Classroom	0 K	Classroom	Instructional 1/23
Classroom	0 K	84%		Classroom	ML	Classroom	0 K			Classroom	0 K IS	Classroom	Instructional 1/23	
Classroom	0 K	27		Classroom	Music / TA's	Classroom	0 K			Classroom	1 IS	Classroom	Open	
Classrooms Used		24		89%		Classroom	Open	Classroom	Art / Music / Intervention	Classroom	2 IS	Classroom	Resource	
						Classroom	SLP	Classroom	Break Room	Classroom	3 IS	Classroom	Resource	
						Classroom	Spec Ed	Classroom	Open	Classroom	4 IS	Classroom	Resource M.L	
						Classroom	Spec Ed	Classroom	0 K	Classroom	5 IS	Classroom	0 K	
						33		Classroom	0 K	Classroom	Resource	Classroom	0 K	
						Classrooms Used		25	Classroom	0 K	34			
						76%		Classroom	0 K	Classrooms Used		30		
								36		88%				
								Classrooms Used						
								32						
								89%						

ARCHITECTURAL PLANS





GREENBRIER

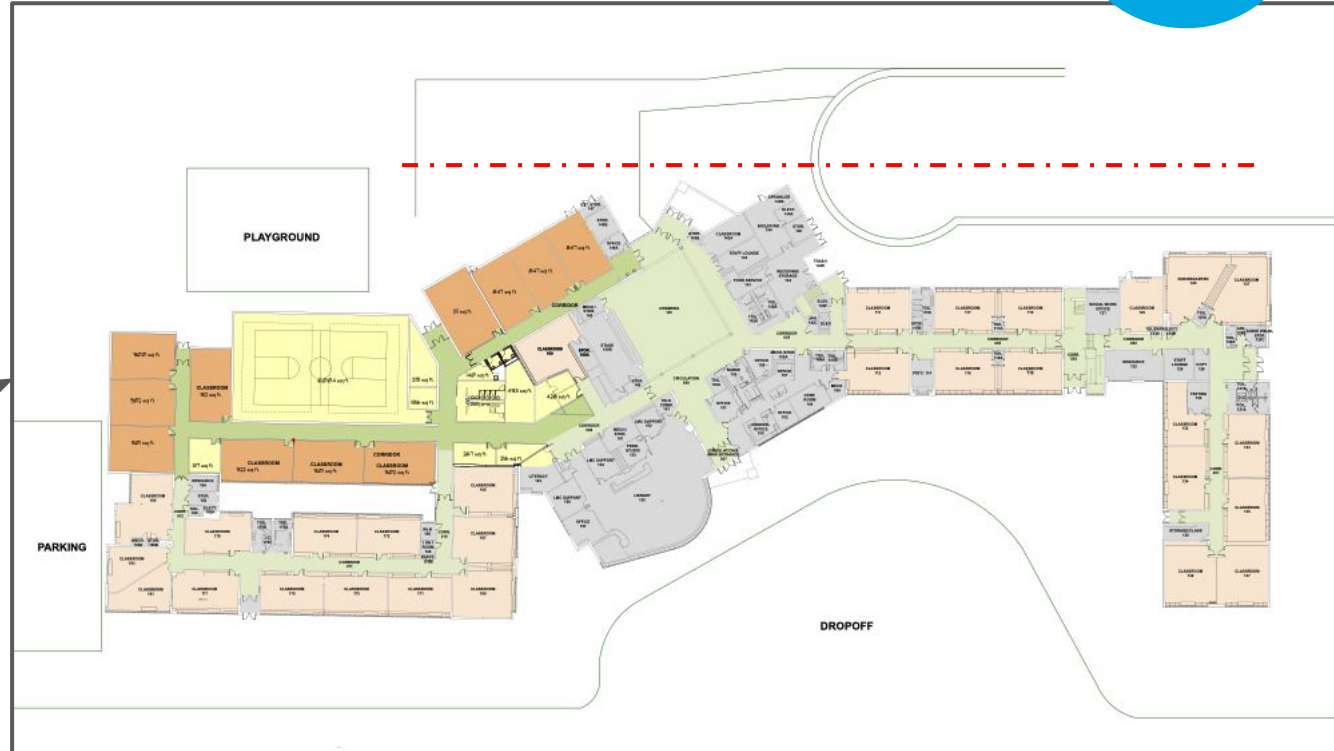
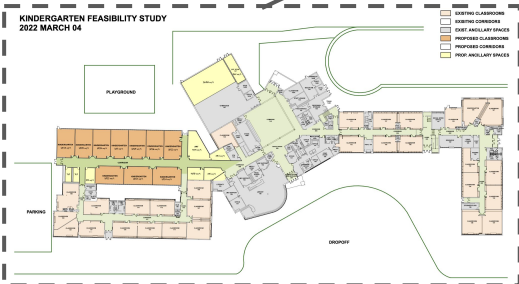


OLIVE-MARY STITT

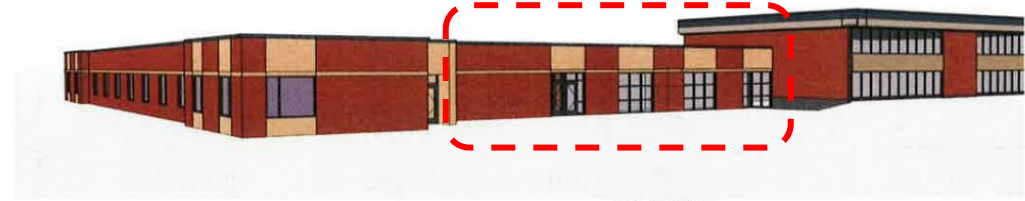
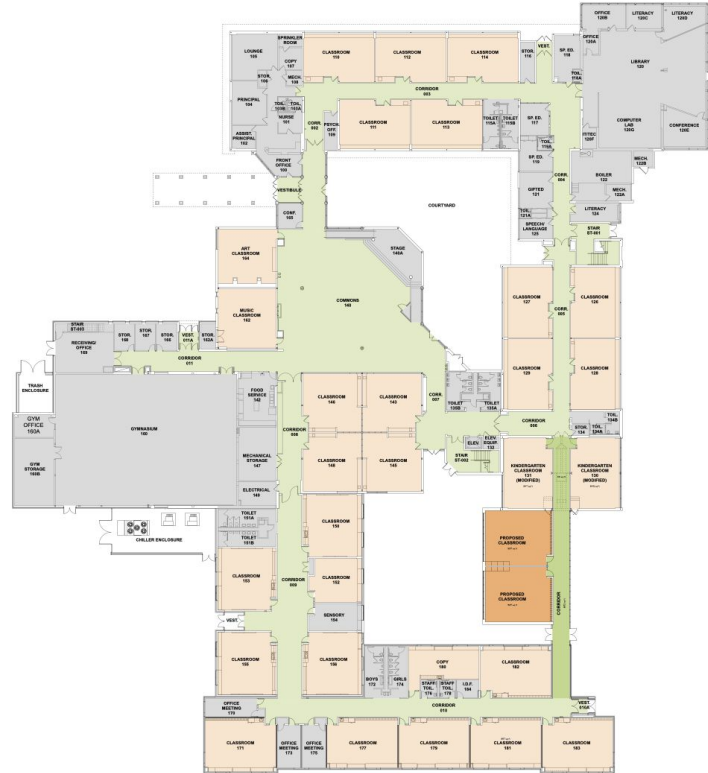




WESTGATE



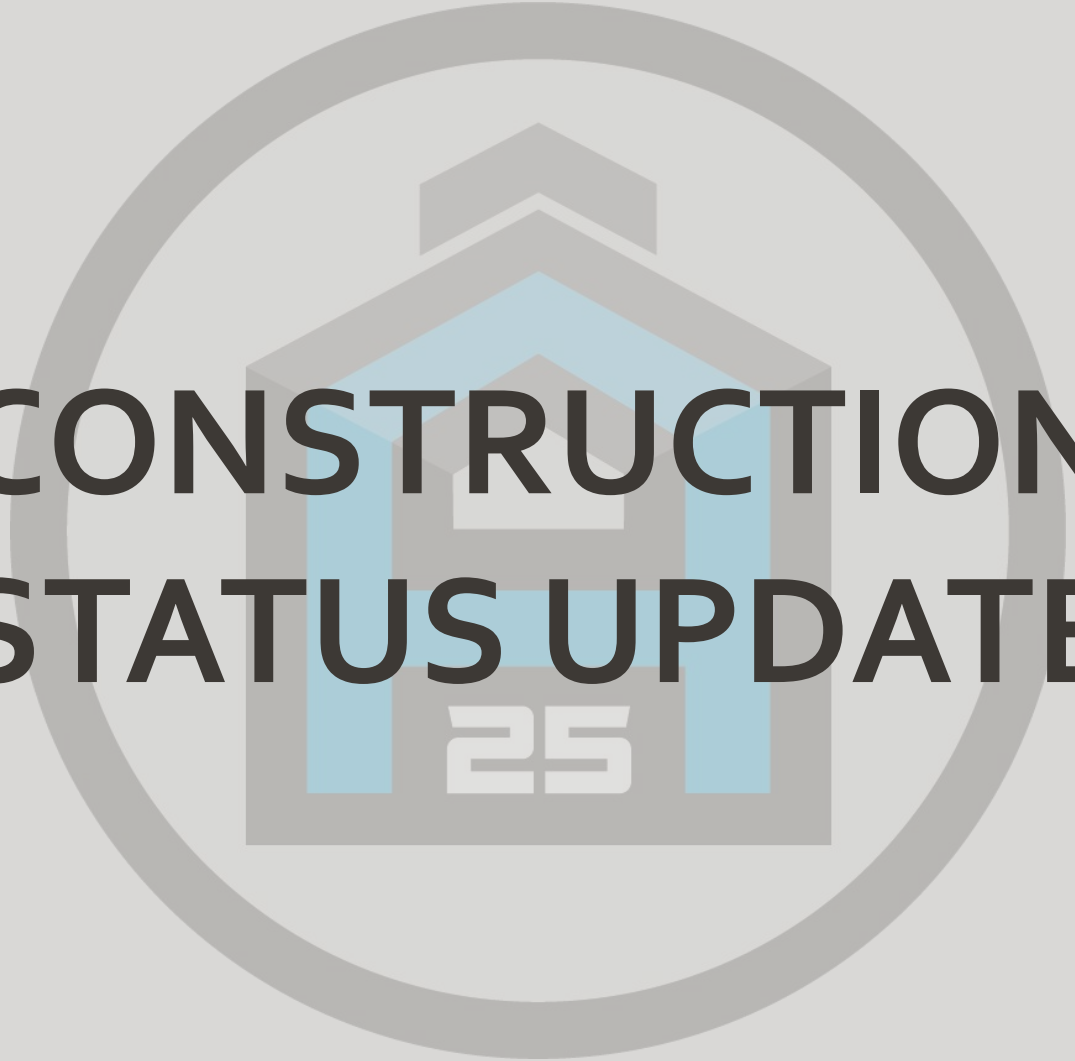
WINDSOR



5 VIEW 2
SCALE 1/8" = 1'-0"



4 VIEW 1
SCALE 1/8" = 1'-0"



CONSTRUCTION STATUS UPDATE

STATUS UPDATE



- ✓ Preliminary Village Review Meeting
- ✓ Preliminary Village Departmental Comments
- ✓ Preliminary Stormwater Review w/ VAH Engineering
- ✓ Meetings with Building Administration to Review Plans and Acquire Additional Building Level Information
- ✓ Traffic Studies Have Begun w/ Traffic Counts and Drone Footage
- ✓ Verified Classroom Count to Support Future Enrollment Needs
- ❑ Continued Architectural Design for Bid Documents
- ❑ Construction Manager Cost Estimates at Various Stages of Design
- ❑ Final Village and MWRD Stormwater Management Strategies per Site
- ❑ Village Review Committees and Board of Trustee Approval
- ❑ Construction Bidding (*Spring '23*)
- ❑ Phase 1 Break Ground (*Spring '23*)
- ❑ Phase 2 Break Ground (*Fall '23 or Spring '24*)



QUESTIONS?