



# SCHOOL SAFETY

September 2022





# SCHOOL SAFETY

This presentation will cover:

1. Plans & Practice
2. People & Partnerships
3. Facilities
4. Safety Audit
  - a. Deterrence
  - b. Detection
  - c. Delay
  - d. Response
5. Arlington Heights Police Department
6. Mental Health Supports
7. Communication

A large, faint background graphic featuring a stylized house icon. The house is composed of several nested, semi-transparent shapes in shades of gray and light blue. At the base of the house, the number '25' is displayed in a white, bold, sans-serif font. The entire house icon is enclosed within a thin, light gray circular border.

# Plans & Practice

# Plans & Practice



- Soft Lockdown
- Hard Lockdown
- School & Bus Evacuation
- Relocation
- Shelter-in-Place
- Medical Emergency

# Plans & Practice



- Aircraft Crash
- Explosion
- Structural Failure
- Suspicious Mail or Package
- Winter Storms
- Earthquake
- Sexual Assault
- Suicidal ABehavior
- Food Contamination
- Automatic External Defibrillator

# Plans & Practice



- Incident Command Structure
- Crisis / Threat Assessment Teams
- Training

# Plans & Practice



- Administrators
- Village-wide
- Teachers & Staff
- Students & Parents

# People & Partnerships





# People & Partnerships



- Arlington Heights Police Department
- Arlington Heights Fire Department
- Village, Library, Park District, D214, Harper College, Area School Districts
- School Safety Task Force

A stylized graphic of a building with a blue facade and a grey roof, set within a large grey circle. The number 25 is displayed in white on a grey rectangular base at the bottom of the building.

# Facilities

# Facilities



## Access Control

- Vestibules
- AiPhone Video Doorbell System
- Keycards with Tracking
- Lockdown Buttons
- Building Intercom Access
- Phones in Rooms
- Camera System
- Door Locks - Internal Door Locking System - being updated

# Access Control - Vestibules and Video Doorbell



- Exterior Doors are locked at all times during the school day.
- Video Doorbell system is used to greet visitors and verify their need for entering the building (i.e. parent drop off item, meeting, etc).
- After verifying a visitors need for entry, Admin Assistant remotely unlocks the exterior door only (not interior vestibule door) and only allows access into the main office.
- Visitor is then asked for ID to run through Raptor Visitor Management system to clear access to building.



Exterior Doorbell w/  
Camera, Speaker and  
Microphone



Interior Desktop Doorbell Station  
with Video Display, Speaker and  
Microphone

# Badges and Keycards



- Staff ID is also used for exterior door keycard.
- Grants staff members building access during set scheduled as defined by their user group (i.e. Admin, teacher, etc).
- ID's are color coded based on the user group for easier identification.

**DO YOU HAVE YOUR ID BADGE?**

WEARING YOUR DESIGNATED BADGE HELPS D25 STAFF & STUDENTS STAY SAFE AND PROTECTED. PLEASE ENSURE THAT YOU ARE WEARING THE PROPER LANYARD AS SHOWN BELOW.

STAFF	GUEST TEACHERS	VISITORS & VOLUNTEERS
ATA, SEIU, TCARN, ESP, FNS, OSP	DAILY & LONG-TERM ASSIGNMENT	PARENTS & BOARD MEMBERS

# Lockdown Buttons, Blue Lights and Communication



Each school has numerous lockdown buttons to quickly communicate an active threat or potential threat with the entire school building and police.

## 1. Lockdown button is pressed

- a. 911 dispatch center is directly notified via radio signal.
- b. All-school tone and announcement is made inside and outside over intercom system.
- c. Interior and exterior lockdown blue lights are activated.
- d. The burglar alarm company will use a phone tree/texts to contact individuals on the call tree to notify them that the lockdown button has been pressed at a specific site.



Large Wall Mounted Lockdown Button in Main Office. Concealed lockdown buttons are also used.



Interior Blue Light Activated

# Building Intercom



The whole building intercom system is able to communicate throughout the entire building (interior and or exterior) or a specific room.

The intercom system is used to deliver messages regarding soft lockdowns, weather issues, or other important information that does not require a hard lockdown.

# Phones in Rooms



The telephone system has multiple functions in order to communicate internally and externally during an emergency.

## Call 911

- Dial 911 or 8911 in order to contact emergency dispatch center. Room location information is provided to dispatch.
- Administration, Building Admin Assistants, and School Nurse are notified on their desk phone when 911 is called.
- Specific District personnel receive text messages with location after 911 is dialed.

## Building All Call

- Each phone has the capability to "All Page" the entire school building over the intercom system.
- Allows individuals to communicate an emergency occurring in various locations of the building with building occupants.



Standard Classroom Desk Phone



# Camera System



Each building has security cameras to capture events that may occur in or near the building. These cameras help assist with post event investigations and as a deterrent to unwanted activities on School property.

## Elementary Schools

- Exterior cameras only
- Cameras record on detected motion only



Exterior Camera

## Middle Schools

- Interior corridor and exterior cameras.
- Cameras record on detected motion only
- Footage can be retrieved by building or District administration in the event it is needed to assist with an event investigation.



Interior Camera

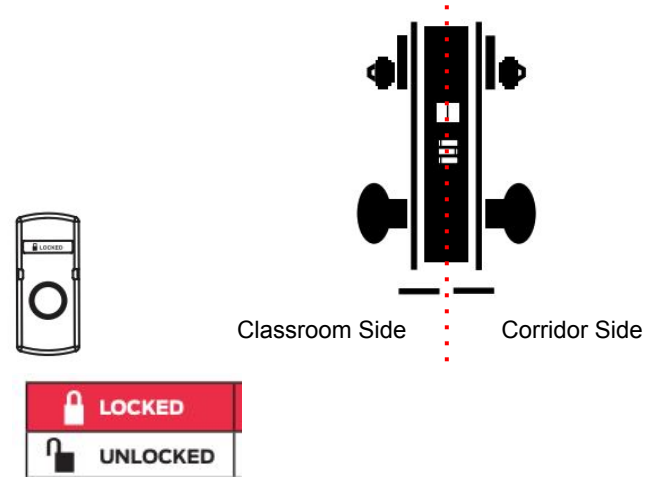
# Door Locks



Each door has the ability to lock the exterior (corridor side) handle with a key from the corridor side of the door. Newer rooms (since 2016) have the additional ability to be able to lock the corridor side door handle with a key from inside of the room.

Currently exploring retrofitting all remaining classroom hardware with:

- Interior thumbturn or other non-keyed functionality to lock corridor side handle.
- Installing visual indicator on classroom or room side of door to give occupants the status of the exterior handle (Locked or Unlocked)



Current Interior Exterior Door Securing Functionality with Double Key. Exploring to convert all existing doors to have interior thumbturn to allow non-keyed securing of exterior handle.



# Safety Audit

# Safety Audit



**Deterrence** - preemptive action, reaction, capability or design, which moderates a threat.

**Detection** - sensing and assessing unauthorized acts in a timely manner; using personnel or hardware

**Delay** - physical barrier that slows and impedes an unauthorized act after detection

**Response** - ability of responsible personnel to arrive at the scene of an unauthorized act in time to thwart violence or damage

The background of the slide features a large, faint watermark of the Arlington Heights Police Department logo. The logo is circular, containing a stylized house with a blue roof and light blue walls. The number '25' is prominently displayed in white at the base of the house.

# **Arlington Heights Police Department**

# Arlington Heights Police Department



Arlington Heights Police train consistently for school emergencies

- Officers O'Leary and Malik have recently participated in the national school safety conference
- Training for police response occurs in District 25 schools as well as off-site
- First to arrive is trained to enter and engage the intruder



# Police Training

SROs attend local, state and national school safety conferences.

Rapid deployment and rescue task force training.

Social media, cyber bullying online and threat assessments investigation training.



# Arlington Heights Police Department



Police have multiple methods of accessing buildings in the event of an emergency.  
Breaching tools in each police vehicle.  
FOB's on Police Key Rings to Open Card Reader Controlled Doors.  
Physical keys for all exterior and interior doors.

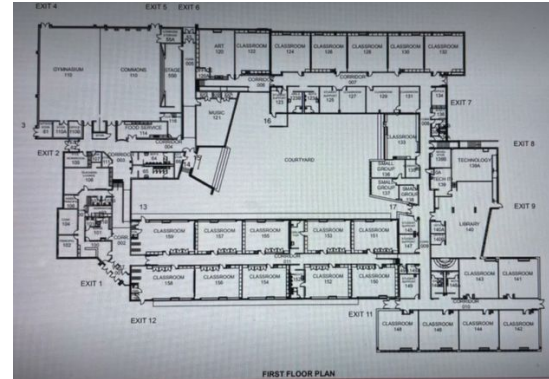




# Arlington Heights Police Department



Local First Responders have access to site plans, door maps, and interior floor plans for District 25 facilities through their in vehicle computers. These plans are regularly updated with the most current information available.



# Mental Health Supports



# Mental Health Supports



- Our School Resource Officers support D25 families with mental health support through the AHPD Social Worker
- D25's implementation of our social-emotional curriculum, RULER, is beginning to address mental health needs on a Tier 1 basis.
- Tier 2 and Tier 3 needs have been determined via
  - Devereux Student Strengths Assessment (DESSA)
  - Teacher & Parent Referral
  - Threat Assessments via social workers/psychologists
- Increased staffing for social workers and psychologists in last few years
  - Their time has quickly filled with student needs

A large, faint watermark logo is centered on the page. It consists of a thick gray circle containing a stylized house. The house is composed of several nested, light blue and gray geometric shapes, creating a 3D effect. At the base of the house, the number '25' is written in a white, bold, sans-serif font.

# Communication

# Communication



- Families are notified ahead of time of all safety drills via school newsletters
- Emergency information is communicated via
  - Text
  - School Messenger
  - Social Media Accounts
- Proactive safety information is always shared with entire community (i.e. *Stranger Danger* report)



**QUESTIONS?**