



6th Day Enrollment Report

September 26, 2023

Brian A. Kaye, Ed.D.

Assistant Superintendent for Personnel & Planning





Sixth Day Enrollment Report

Details of the Presentation Include:

1. District Enrollment Data
2. 2023 Sixth Day Total Enrollment By School
3. Early Childhood Program Enrollment History
4. Enrollment History K-8 Students
*including Out-Of-District Placement
5. District Enrollment Grades K-8
*Updated Kasarda Demographic Projections From February 2022




District Enrollment Data

District Enrollment Data
Thursday, August 24, 2023

*6th Day Enrollment INCLUDING Early Childhood (EC) & Out-of-District Placements

DISTRICT	2013	2014	2015	2016	2017	2018	2019	2020	2021	2022	2023
Kindergarten	450	477	484	496	508	499	502	475	469	412	386
1st - 5th	2865	2,949	2,975	2,992	3,028	3,130	3,122	2,962	2,886	2,913	2,891
6th - 8th	1,795	1,777	1,778	1,854	1,876	1,812	1,786	1,763	1,803	1,795	1,819
Enrollment	5,110	5,203	5,237	5,342	5,412	5,441	5,410	5,200	5,158	5,120	5,096
Early Childhood *	139	130	124	143	127	126	131	120	111	132	132
Out of District Placements	38	33	37	39	37	40	42	42	40	38	42
Total Enrollment *	5,287	5,366	5,398	5,524	5,576	5,607	5,583	5,362	5,309	5,290	5,270



2023 Sixth Day Total Enrollment By School

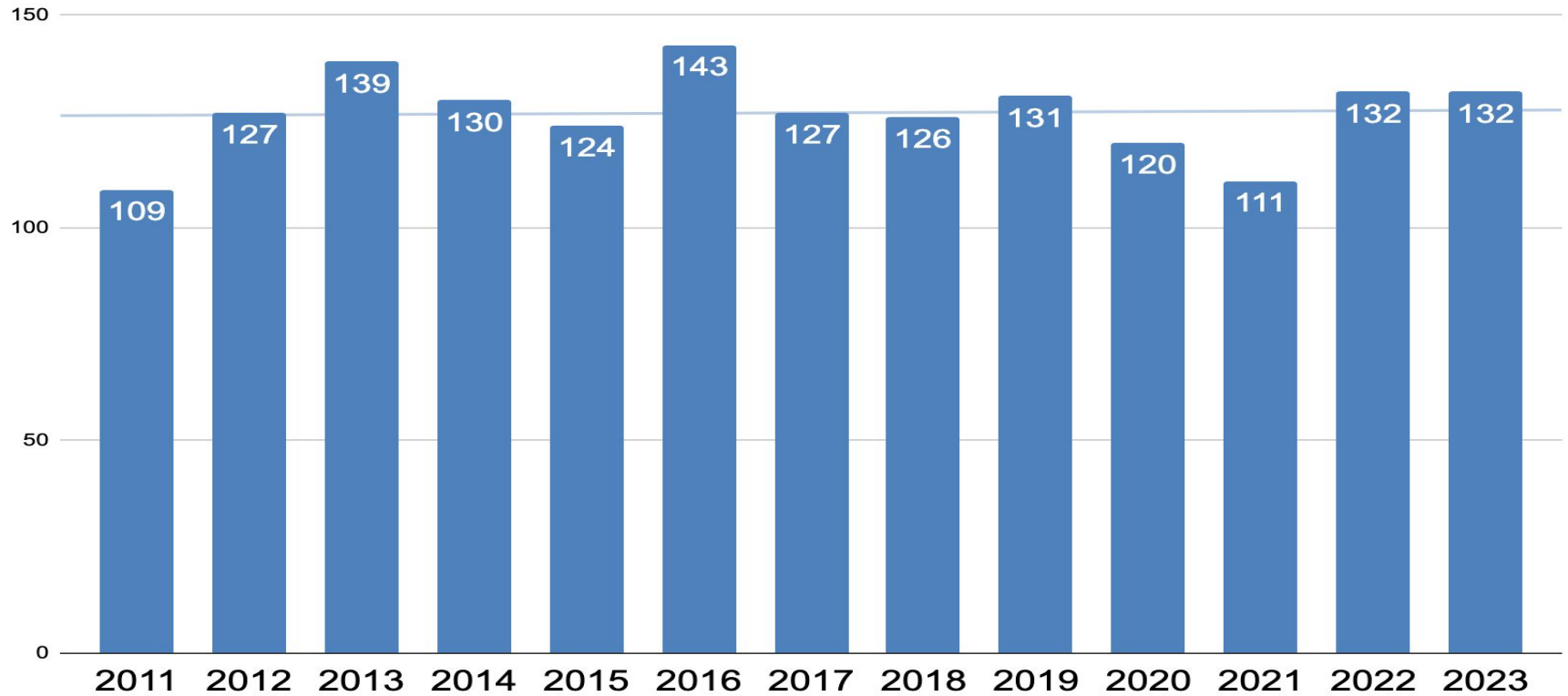
2023 Sixth Day Total Enrollment By School
Thursday, August 24, 2023

	Dryden	Greenbrier	Ivy Hill	Olive	Patton	South	Thomas	Westgate	Windsor
2014	496	373	548	598	446	868	909	620	475
2015	504	391	558	580	438	832	946	621	491
2016	487	419	596	587	430	897	957	603	509
2017	498	396	629	607	435	900	976	581	517
2018	499	405	682	632	445	882	930	571	521
2019	487	420	654	660	409	849	937	594	531
2020	474	424	562	615	421	825	938	567	494
2021	478	386	522	624	401	848	955	600	455
2022	468	401	528	628	382	843	952	586	464
2023	465	384	510	585	382	821	998	613	470
DIFFERENCE 2022-2023	(-3)	(-17)	(-18)	(-43)	0	(-22)	(+46)	(+27)	(+6)



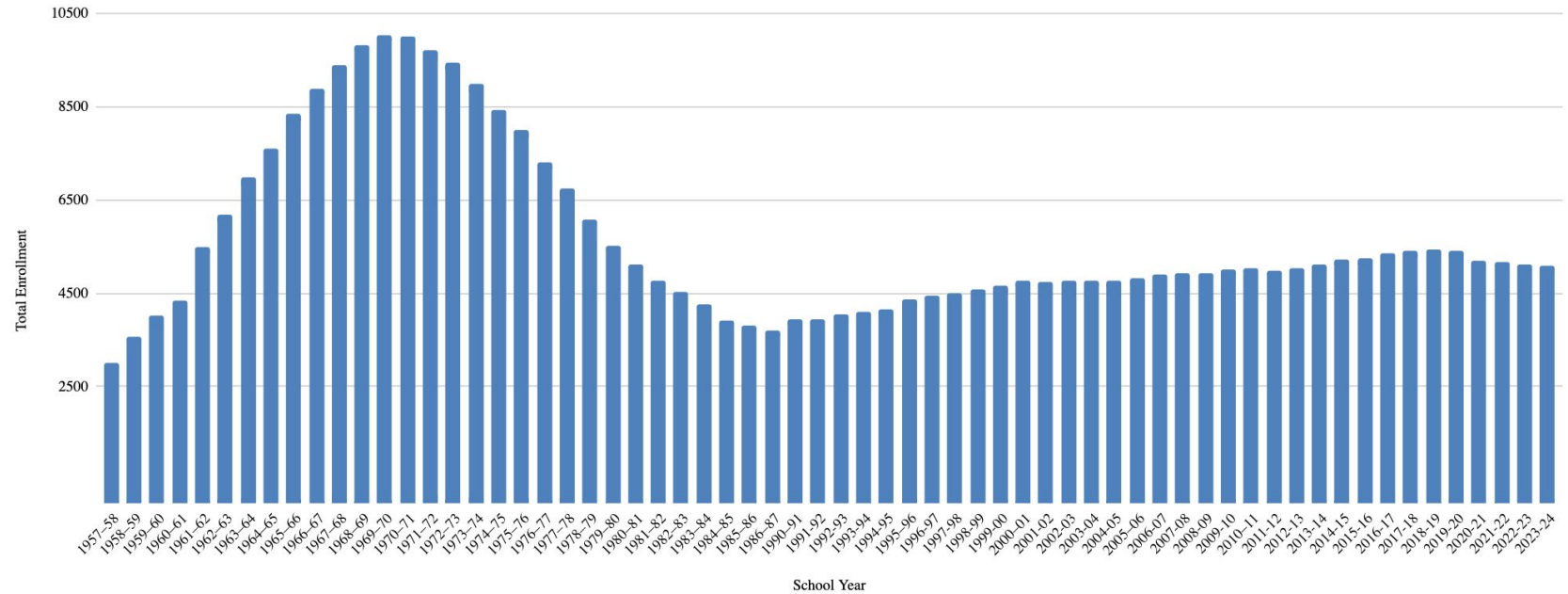
2023 Sixth Day Total Enrollment - Early Childhood

Early Childhood Program Enrollment History 2011 - 2023



Early Childhood Program Enrollment History 1957 - 2023

Total Enrollment vs. School Year





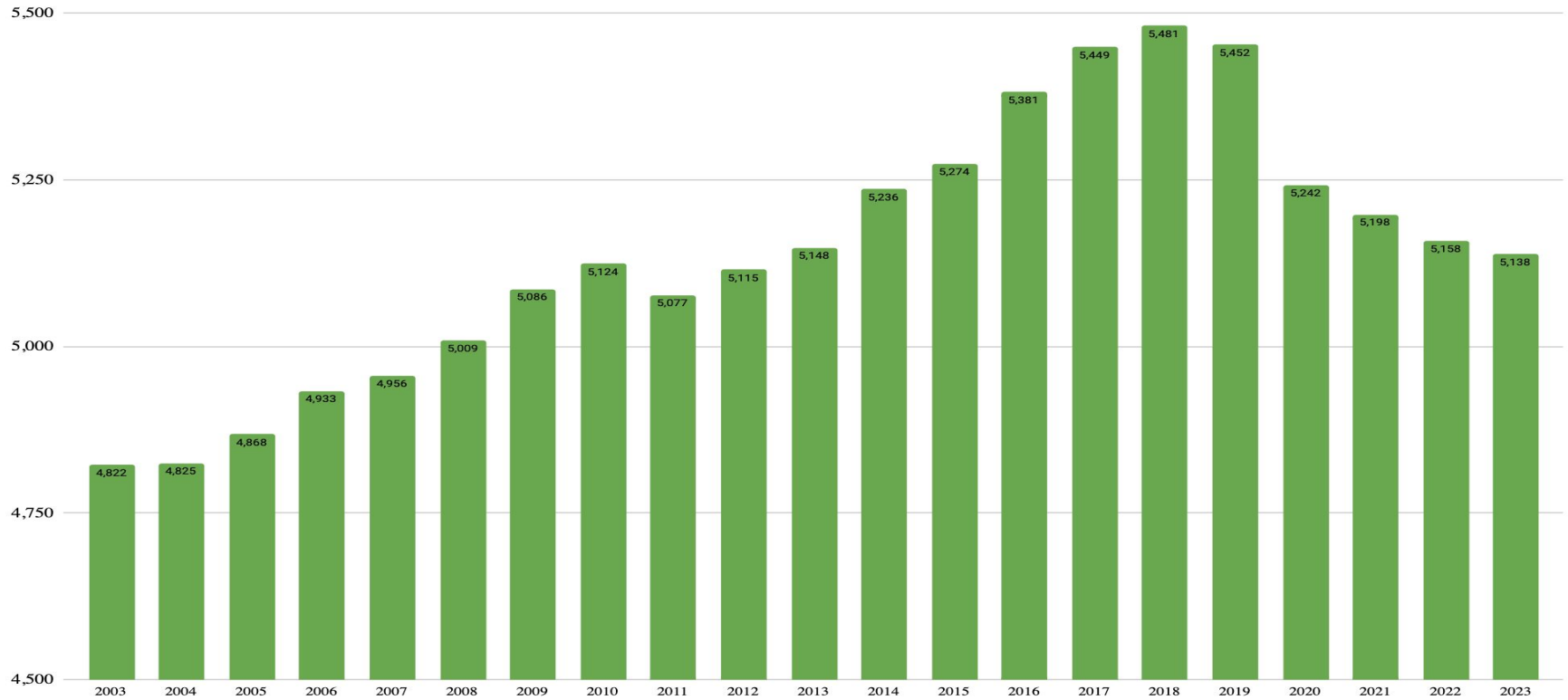
Enrollment History K-8 Students

***includes Out-Of-District Placement**

Enrollment History - K-8 Students (2003 - 2023)

* Includes Out-of-District Placements

* Does NOT include EC

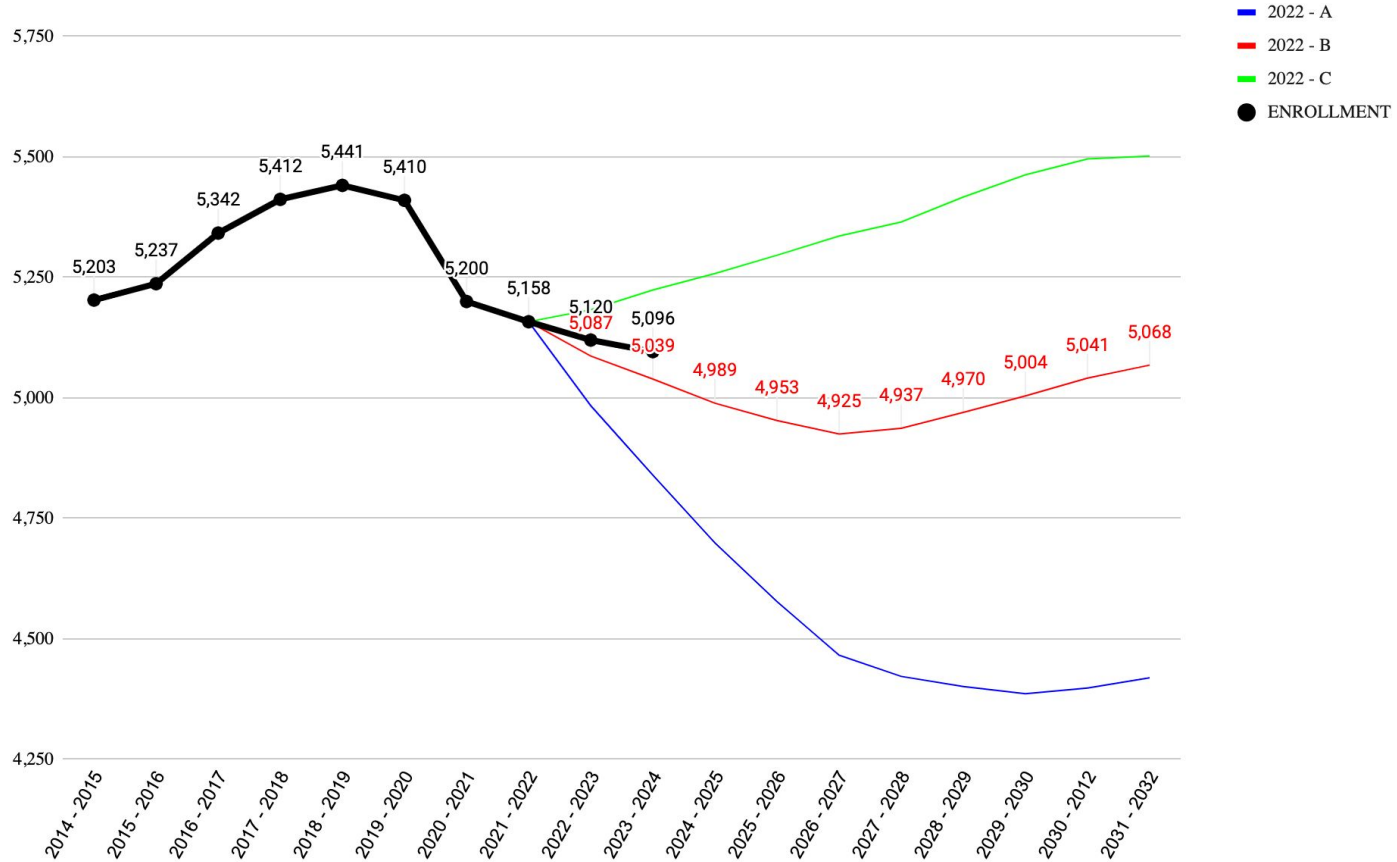




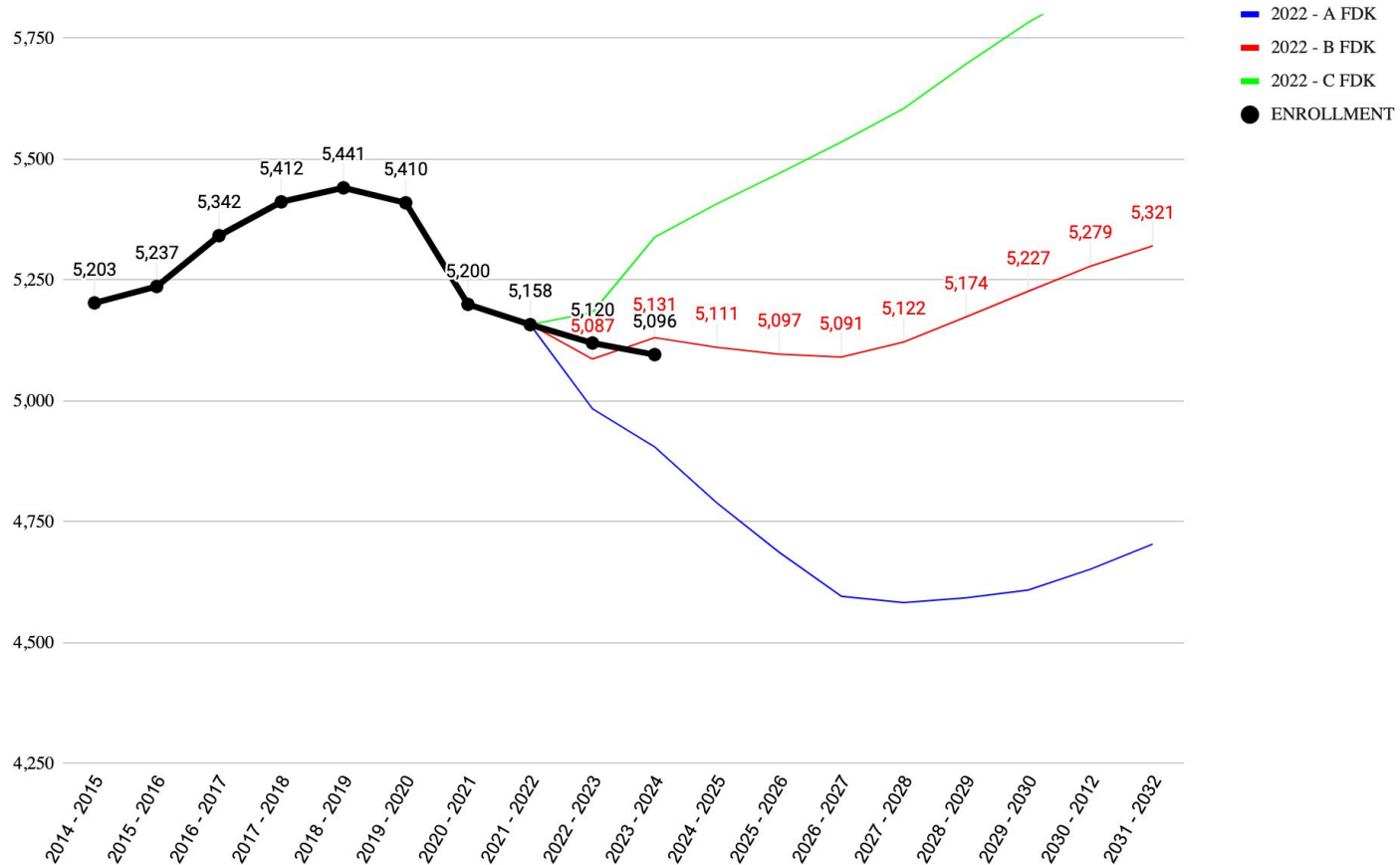
District Enrollment Grades K-8

***Updated Kasarda Demographic Projections
January 2022
May 2022**

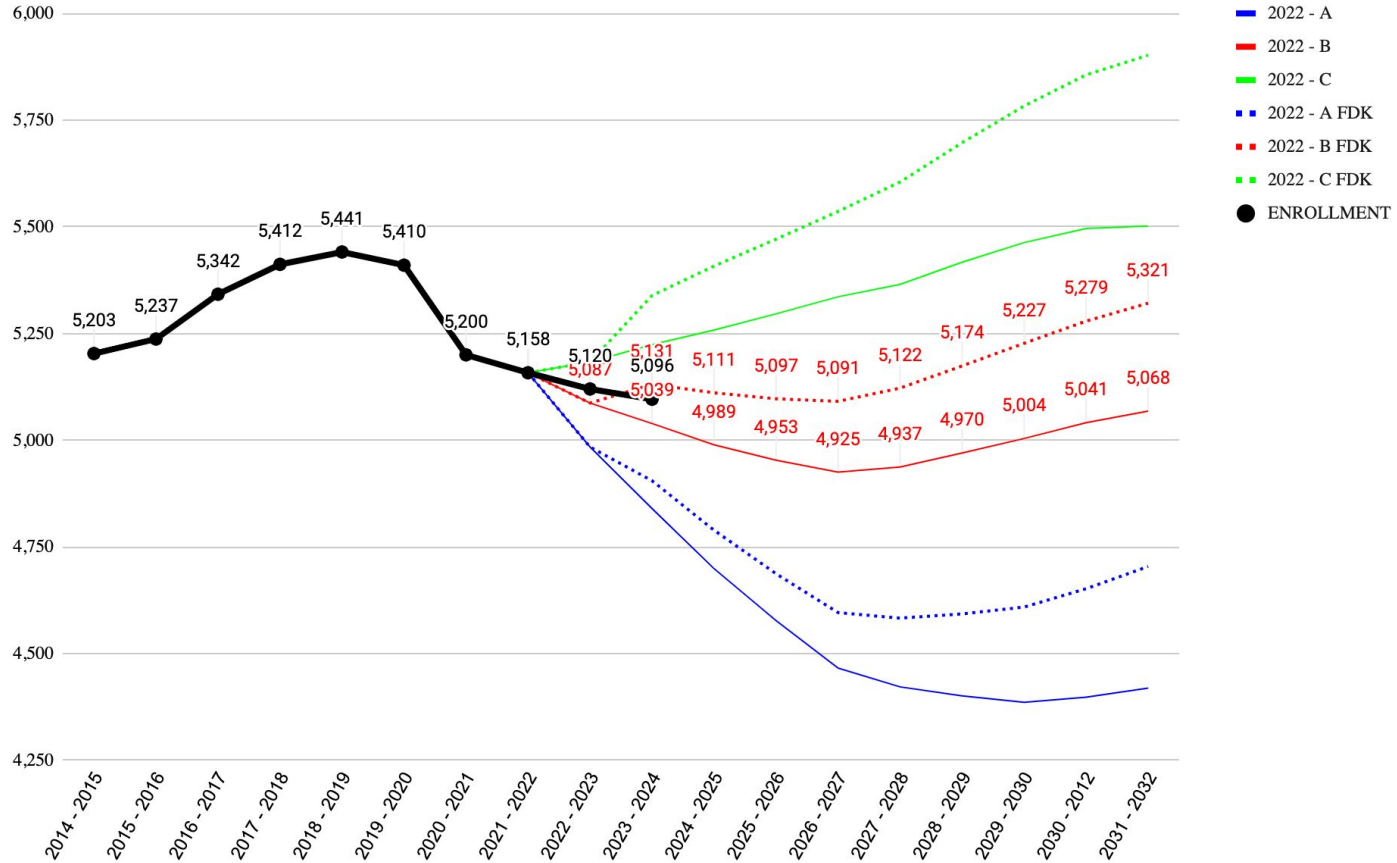
Kasarda Enrollment Projection - January 2022



Kasarda Enrollment Projection - May 2022 (*if FDK commences in Fall 2023)



Kasarda Enrollment Projection - January 2022 & May 2022 (*if FDK commences in Fall 2023)





QUESTIONS?