



#Build25

Expansion and Capital Upgrades Update

July 16, 2024



Summary



Dryden

- 4 Classrooms
- Gym Expansion
- Main Office Reconfiguration
- Restroom Upgrades
- Parking Lot Renovations
- Corridor Flooring Replacements
- New Playground

Greenbrier

- 2 Classrooms
- Commons and 2nd Floor Corridor Flooring Replacement
- Gym Air Conditioning
- Roof Improvements
- Parking Lot Renovations

Olive-Mary Stitt

- 4 Classrooms

Patton

- 3 Classrooms
- Gym Expansion
- New Foodservice Areas
- Parking Lot Renovations

Westgate

- 10 Classrooms
- New Gym
- Galvanized Piping Replacements
- Restroom Upgrades
- Corridor Flooring Replacements
- New Plumbing, Ceilings, LED Lighting in Existing Building
- Parking Lot Renovations
- Roof Improvements

Windsor

- 2 Classrooms
- 2 Classroom Renovations
- New Corridor Flooring Throughout

Remaining Timeline

Between Now and August 10th

- Complete Interior Finishes
- Finalize Startup and Balancing of HVAC System
- Sitework, Parking Lots, and Landscaping
- Move District 25 Contents into New Locations

August 10th - Scheduled Substantial Completion of Construction

Between August 10th and August 26th

- Final Moves, Setup and Final Cleaning
- Finalize Punchlist Items

Between August 26th and August 29th

- Support Teachers and Staff in Finalizing Student Preparations

August 29th - First Day of Students

Dryden

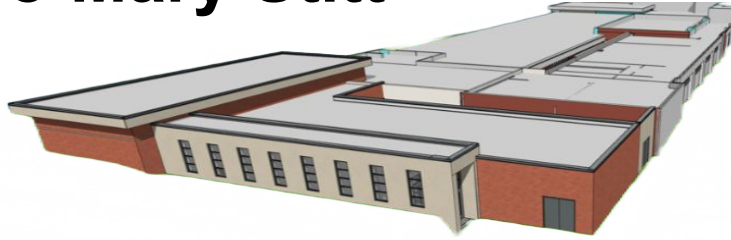
New Existing



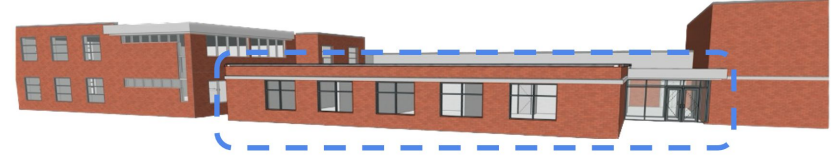
Greenbrier



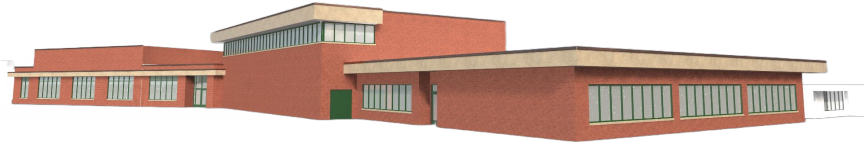
Olive-Mary Stitt



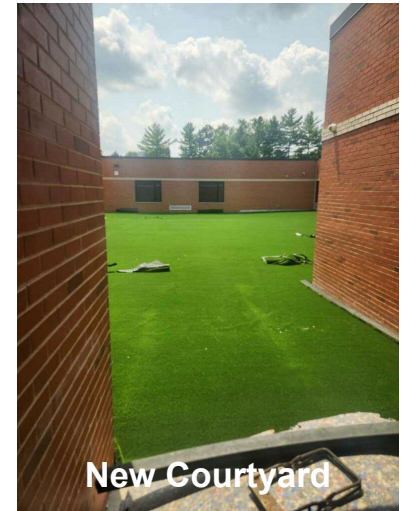
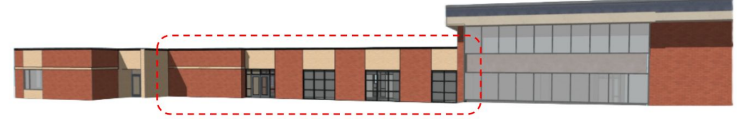
Patton



Westgate



Windsor

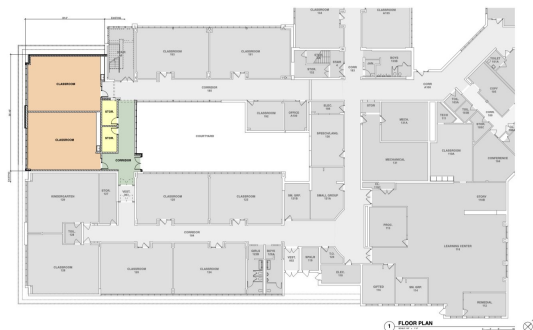


Floor Plans



FLOOR PLAN - CONCEPTUAL

Dryden



FLOOR PLAN - CONCEPTUAL



STR
SCHOOL TRUST
10000 N. 100th Ave., Suite 100
Avonorton Heights, OH 44024

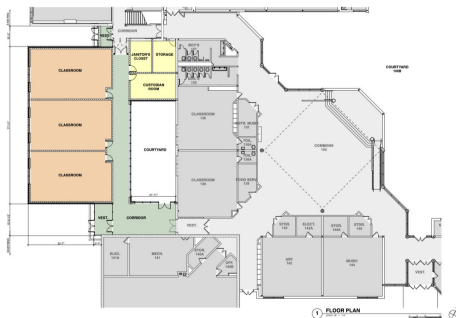
GREENBRIER ELEMENTARY SCHOOL ADDITION
10000 N. 100th Ave., Suite 100
Avonorton Heights, OH 44024

Greenbrier



FLOOR PLAN - CONCEPTUAL

Olive



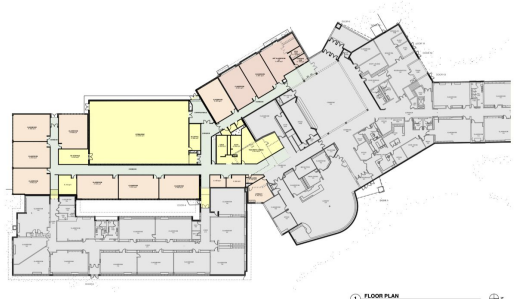
FLOOR PLAN - CONCEPTUAL



STR
SCHOOL TRUST
10000 N. 100th Ave., Suite 100
Avonorton Heights, OH 44024

PATTON ELEMENTARY SCHOOL ADDITION
10000 N. 100th Ave., Suite 100
Avonorton Heights, OH 44024

Patton



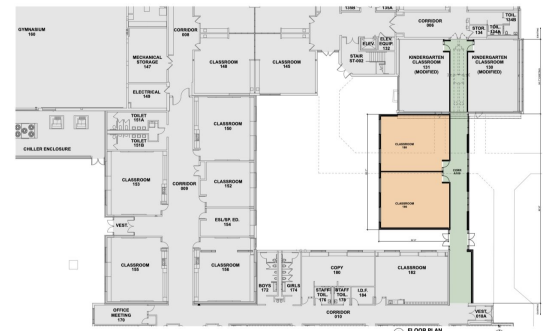
FLOOR PLAN - CONCEPTUAL



STR
SCHOOL TRUST
10000 N. 100th Ave., Suite 100
Avonorton Heights, OH 44024

WESTGATE ELEMENTARY SCHOOL ADDITION AND RENOVATIONS
10000 N. 100th Ave., Suite 100
Avonorton Heights, OH 44024

Westgate



FLOOR PLAN - CONCEPTUAL

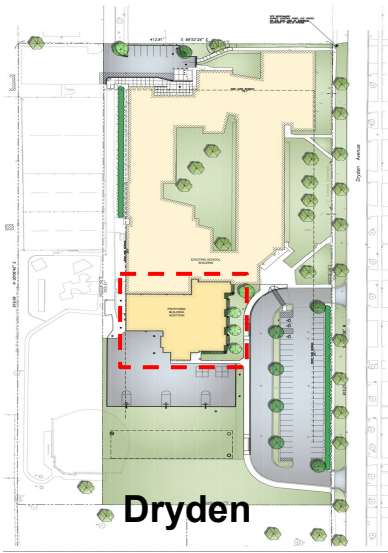


STR
SCHOOL TRUST
10000 N. 100th Ave., Suite 100
Avonorton Heights, OH 44024

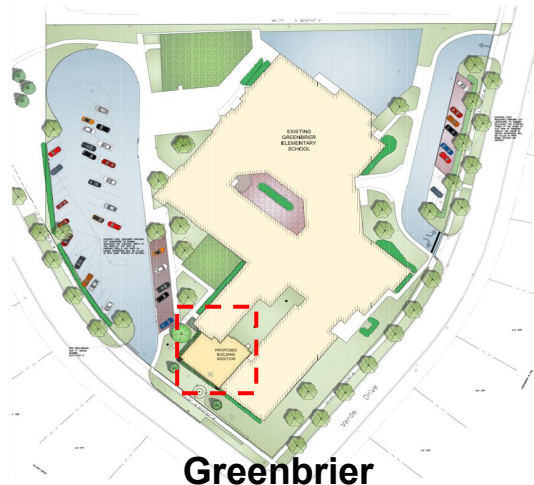
WINDSOR ELEMENTARY SCHOOL ADDITION
10000 N. 100th Ave., Suite 100
Avonorton Heights, OH 44024

Windsor

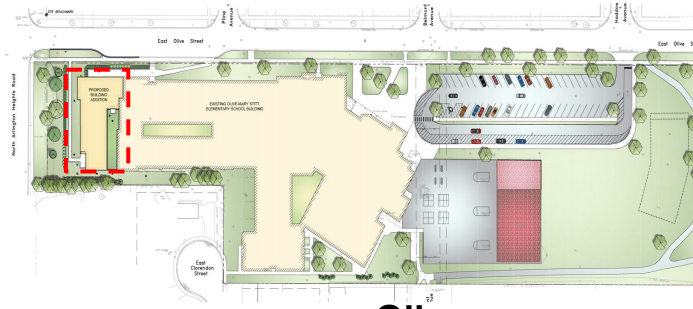
Site Plans



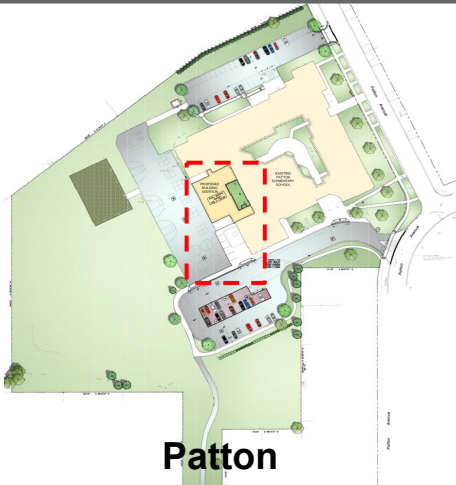
Dryden



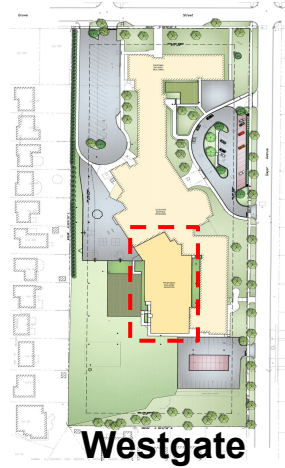
Greenbrier



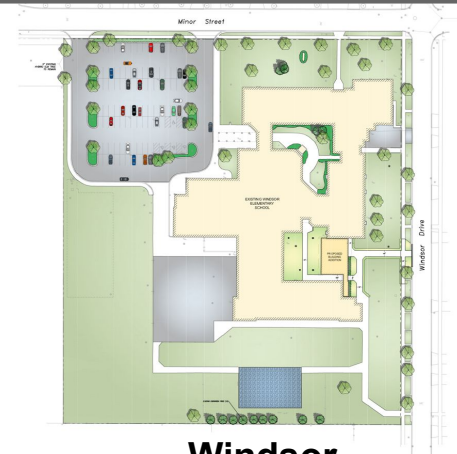
Olive



Patton



Westgate



Windsor



Questions?

