



# 6th Day Enrollment Report

September 24, 2024

Kendra Perri

Assistant Superintendent for  
Personnel & Planning



# Sixth Day Enrollment Report

## Details of the Presentation Include:

1. District Enrollment Data
2. 2024 Sixth Day Total Enrollment By School
3. Early Childhood Program Enrollment History
4. Enrollment History K-8 Students  
\*including Out-Of-District Placement
5. District Enrollment Grades K-8  
\*Updated Kasarda Demographic Projections From February 2022




# District Enrollment Data

**District Enrollment Data**  
**Friday, September 6th, 2024**

**\*6th Day Enrollment INCLUDING Early Childhood (EC) & Out-of-District Placements**

DISTRICT	2014	2015	2016	2017	2018	2019	2020	2021	2022	2023	2024
Kindergarten	477	484	496	508	499	502	475	469	412	386	491
1st - 5th	2,949	2,975	2,992	3,028	3,130	3,122	2,962	2,886	2,913	2,891	2,881
6th - 8th	1,777	1,778	1,854	1,876	1,812	1,786	1,763	1,803	1,795	1,819	1,814
Enrollment	5,203	5,237	5,342	5,412	5,441	5,410	5,200	5,158	5,120	5,096	5,186
Early Childhood *	130	124	143	127	126	131	120	111	132	132	135
Out of District Placements	33	37	39	37	40	42	42	40	38	42	45
Total Enrollment *	5,366	5,398	5,524	5,576	5,607	5,583	5,362	5,309	5,290	5,270	5,366



# 2024 Sixth Day Total Enrollment By School

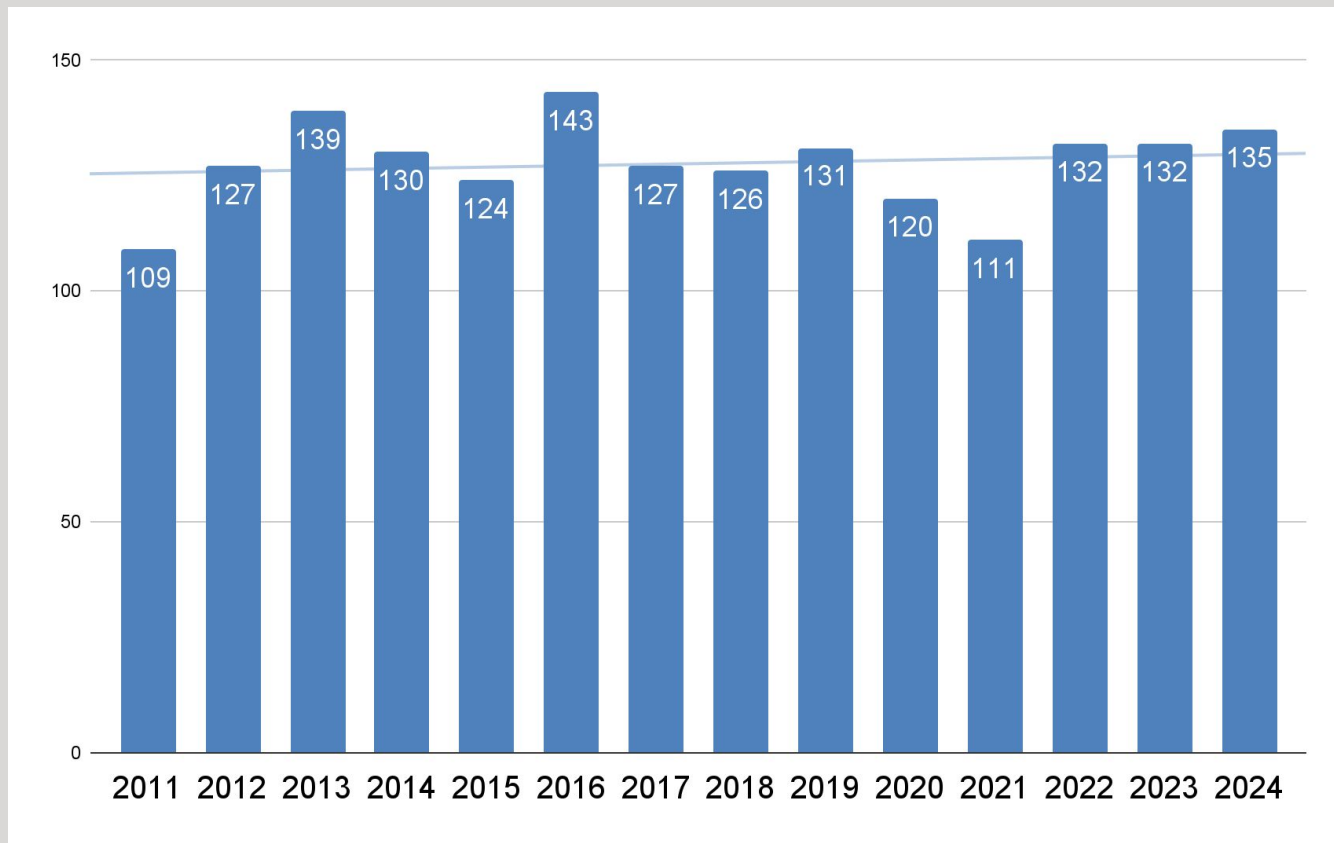
**2024 Sixth Day Total Enrollment By School**  
**Friday, September 6, 2024**

	Dryden	Greenbrier	Ivy Hill	Olive	Patton	South	Thomas	Westgate	Windsor
2014	496	373	548	598	446	868	909	620	475
2015	504	391	558	580	438	832	946	621	491
2016	487	419	596	587	430	897	957	603	509
2017	498	396	629	607	435	900	976	581	517
2018	499	405	682	632	445	882	930	571	521
2019	487	420	654	660	409	849	937	594	531
2020	474	424	562	615	421	825	938	567	494
2021	478	386	522	624	401	848	955	600	455
2022	468	401	528	628	382	843	952	586	464
2023	465	384	510	585	382	821	998	613	470
2024	470	385	541	625	370	802	1012	619	497
<b>DIFFERENCE 2024-2025</b>	(+5)	(+1)	(+31)	(+40)	{-12}	(-19)	(+14)	(+6)	(+27)



# 2024 Sixth Day Total Enrollment - Early Childhood

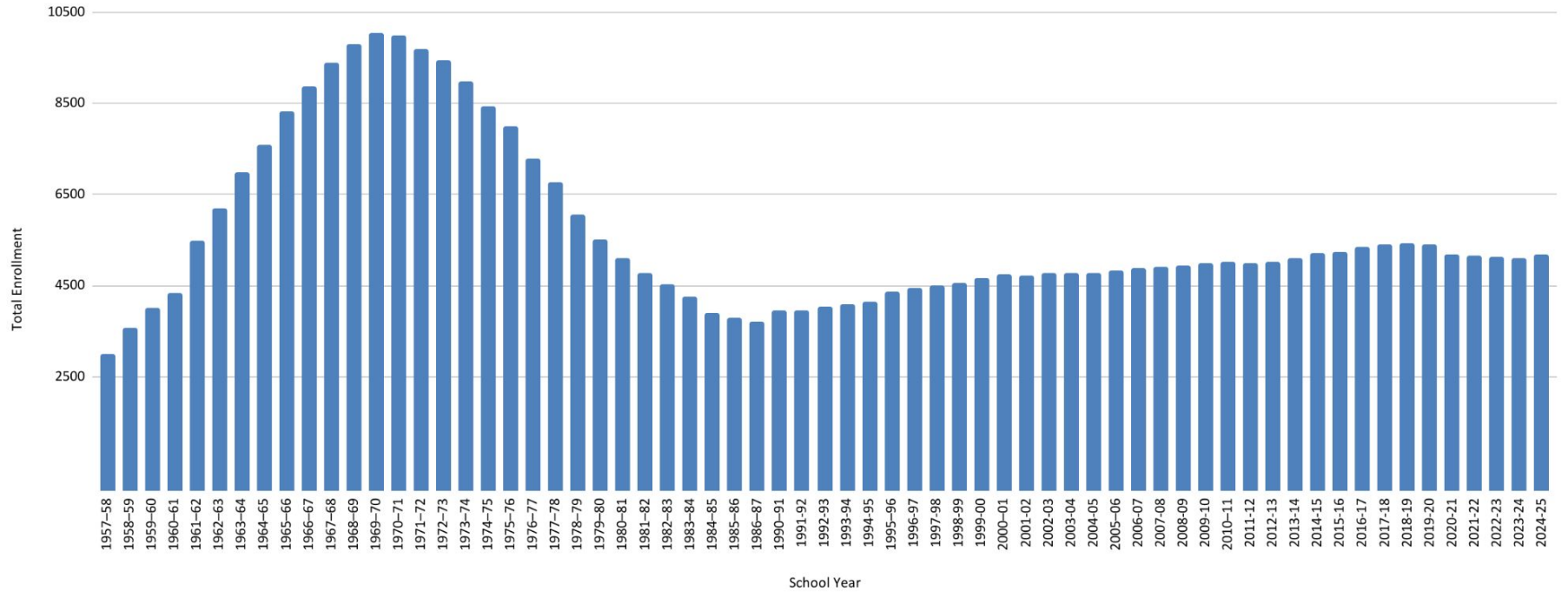
# Early Childhood Program Enrollment History 2011 - 2024



# Enrollment History

## 1957 - 2024

Total Enrollment vs. School Year





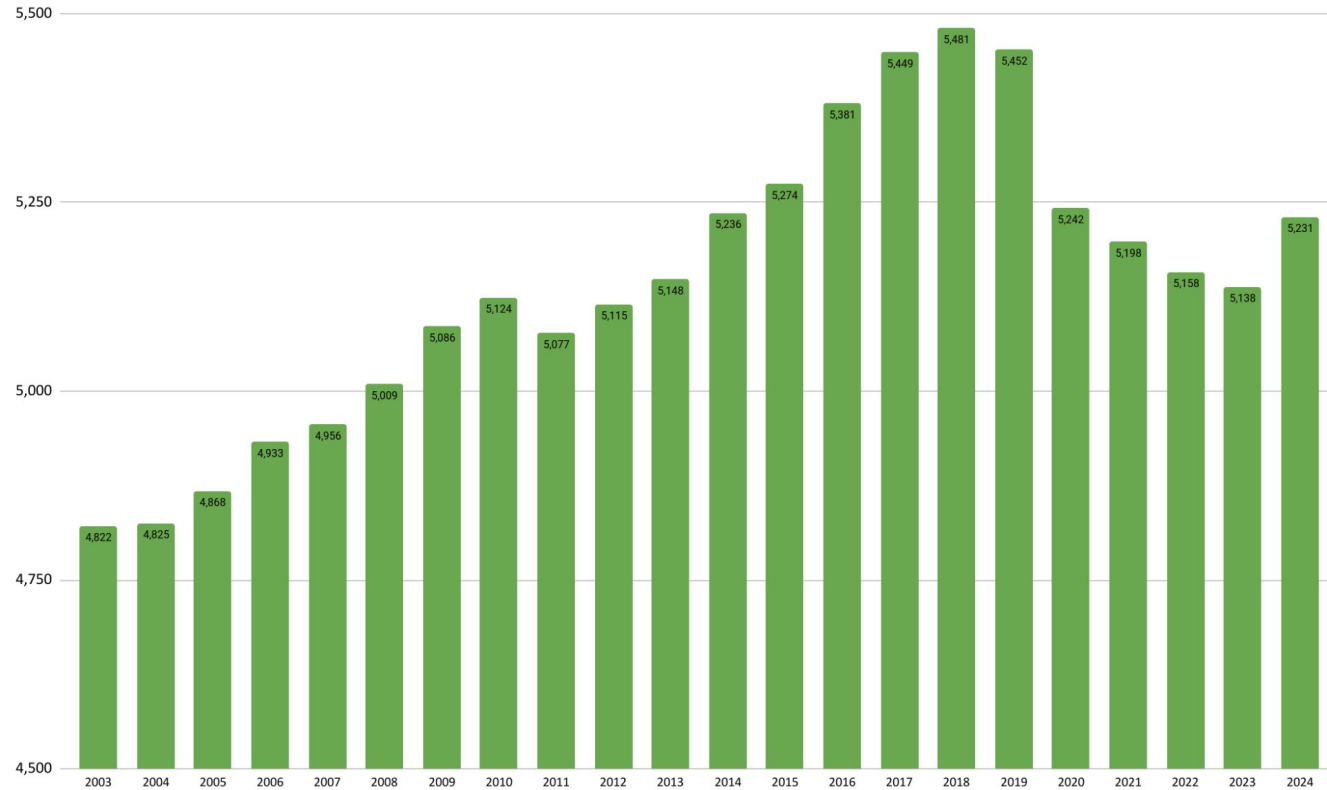
# Enrollment History K-8 Students

**\*includes Out-Of-District Placement**

## Enrollment History - K-8 Students (2003 - 2024)

\* Includes Out-of-District Placements

\* Does NOT include EC

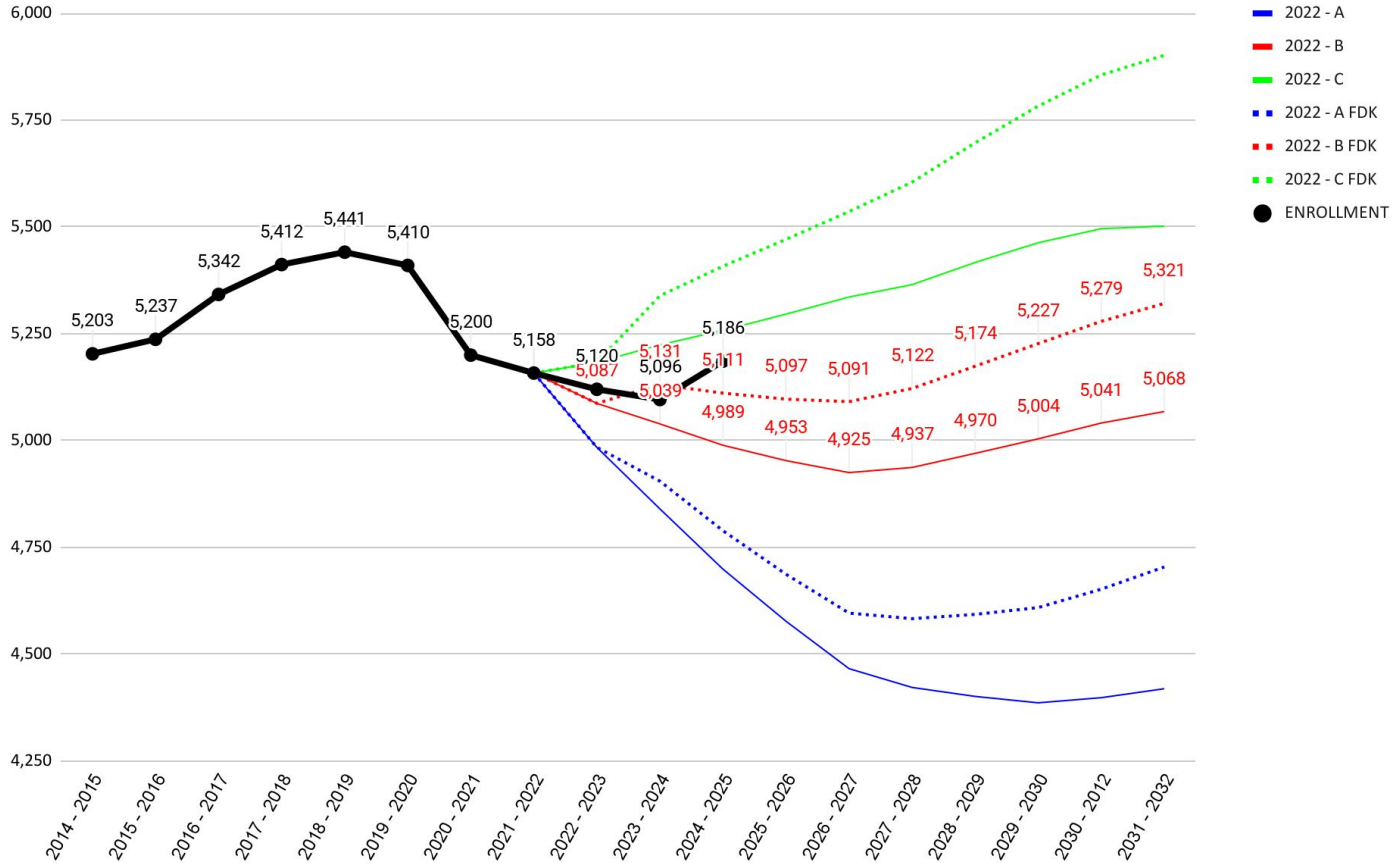




# **District Enrollment Grades K-8**

**\*Updated Kasarda Demographic Projections  
January 2022  
May 2022**

# Kasarda Enrollment Projection - January 2022 & May 2022 (\*if FDK commences in Fall 2023)





**QUESTIONS?**