

District 25 Assessment Update

—

Spring 2021

Spring 2021 Overview

- FastBridge (kindergarten and 1st)
 - In person and remote administration (for remote students)
- NWEA MAP (2nd through 8th)
 - In person administration
- Illinois Assessment of Readiness (3rd through 8th)
 - In person administration
- Illinois Science Assessment (5th and 8th)
 - In person administration

Factors that Impact Student Performance/Growth

- Pandemic-related stressors
- Difficulty providing consistent small group instruction
- Curriculum prioritized and delivered at a slower pace
- Inflated fall scores (from NWEA: “remote testing may be a qualitatively different experience for the youngest students.”)
- Over 20% of D25 remote students did not MAP test this spring

Educational Research from 2020-2021 School Year

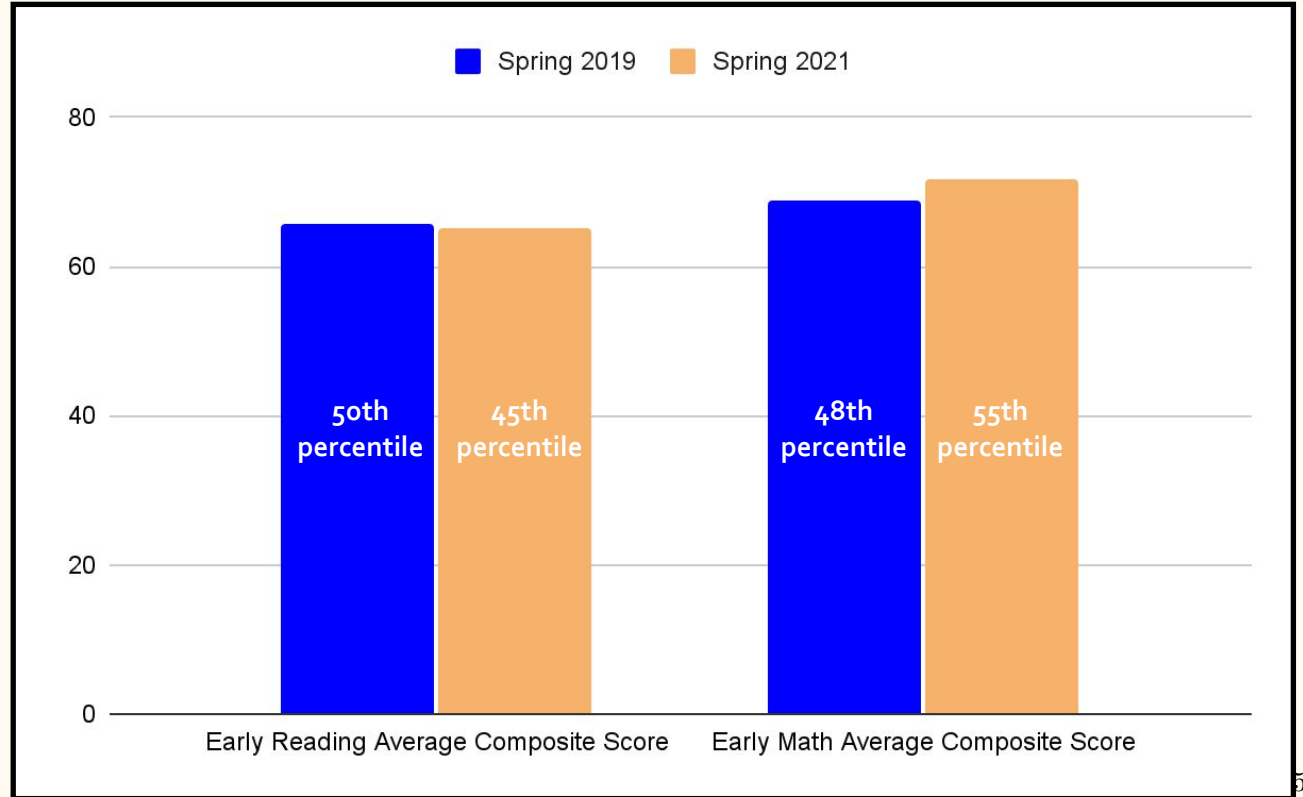
- A national study conducted by the Policy Analysis for California Education found that as of late fall 2020, 2nd and 3rd graders' general reading ability was 26-33% behind projections due to the pandemic.
- In the fall of 2020, NWEA noted that student test scores dropped about 7.5 percentile points from the fall of 2019.
- A national study conducted by Curriculum Associates in the winter of 2021 found that students' ability to perform at grade level in math and reading fell 16% and 10% respectively from the year prior.
- McKinsey & Company projected that students nationally are likely to have five to nine months of typical instruction interrupted by the end of the 2020-21 school year.

FastBridge Math & Reading Performance - Kindergarten

Between the two testing seasons, reading scores were stable

Math scores reflected a slight improvement over 2019

During this pandemic year, kindergarten students performed similarly to kindergarten students pre-pandemic

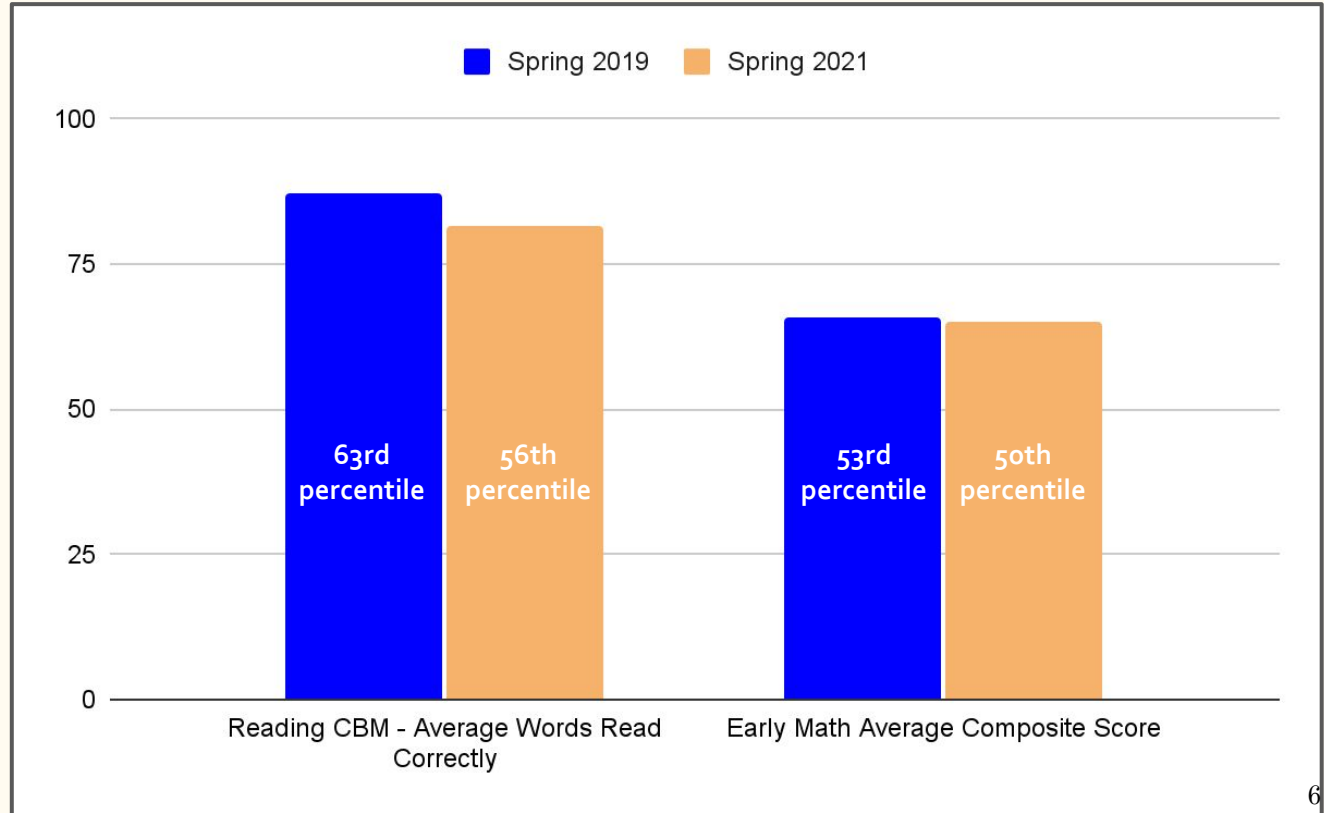


FastBridge Math & Reading Performance - 1st Grade

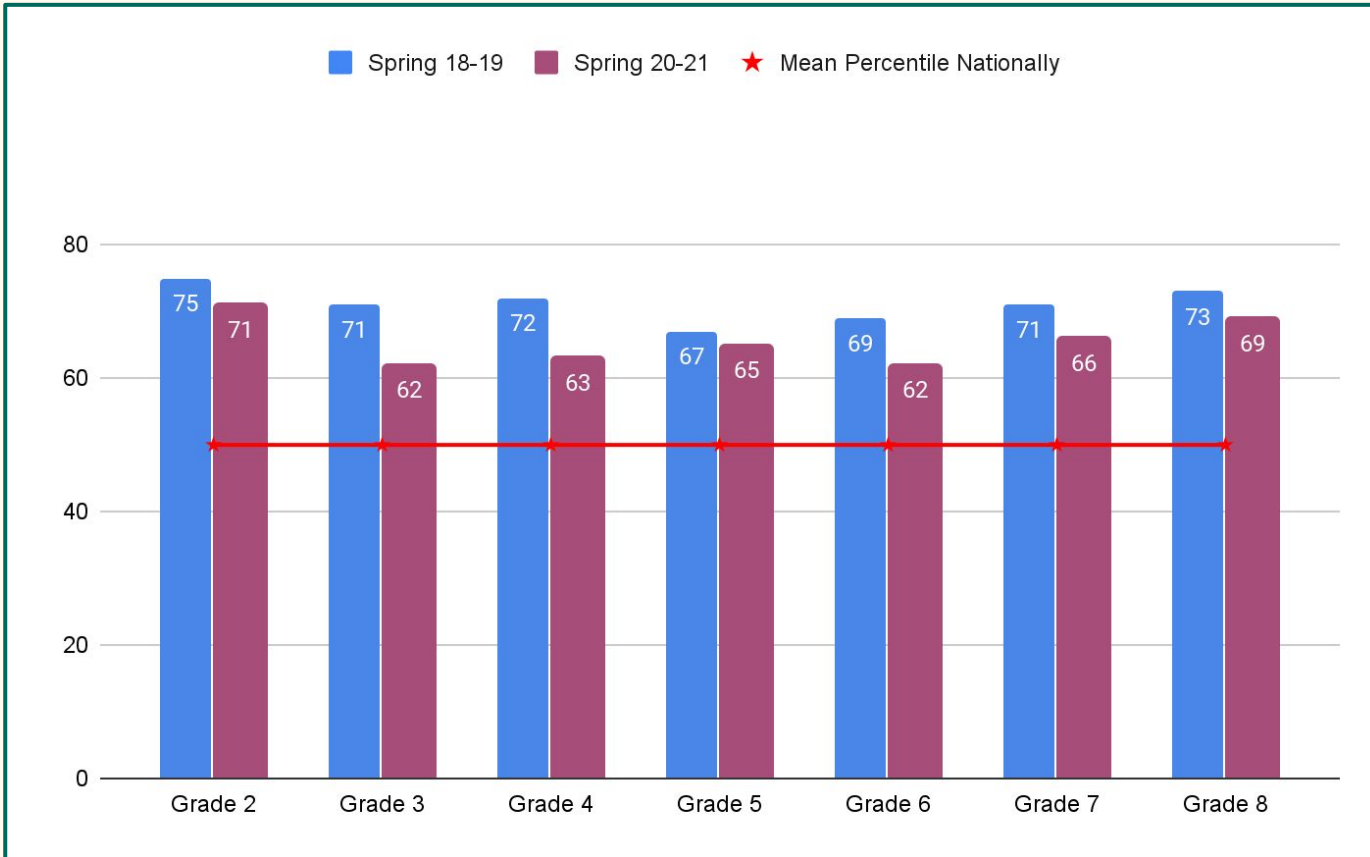
Between the two testing seasons, correct words read per minute reflected a slight decline

Math scores were stable

During this pandemic year, 1st grade students scored similarly in math, but declined in their words read correctly compared to 1st grade students pre-pandemic



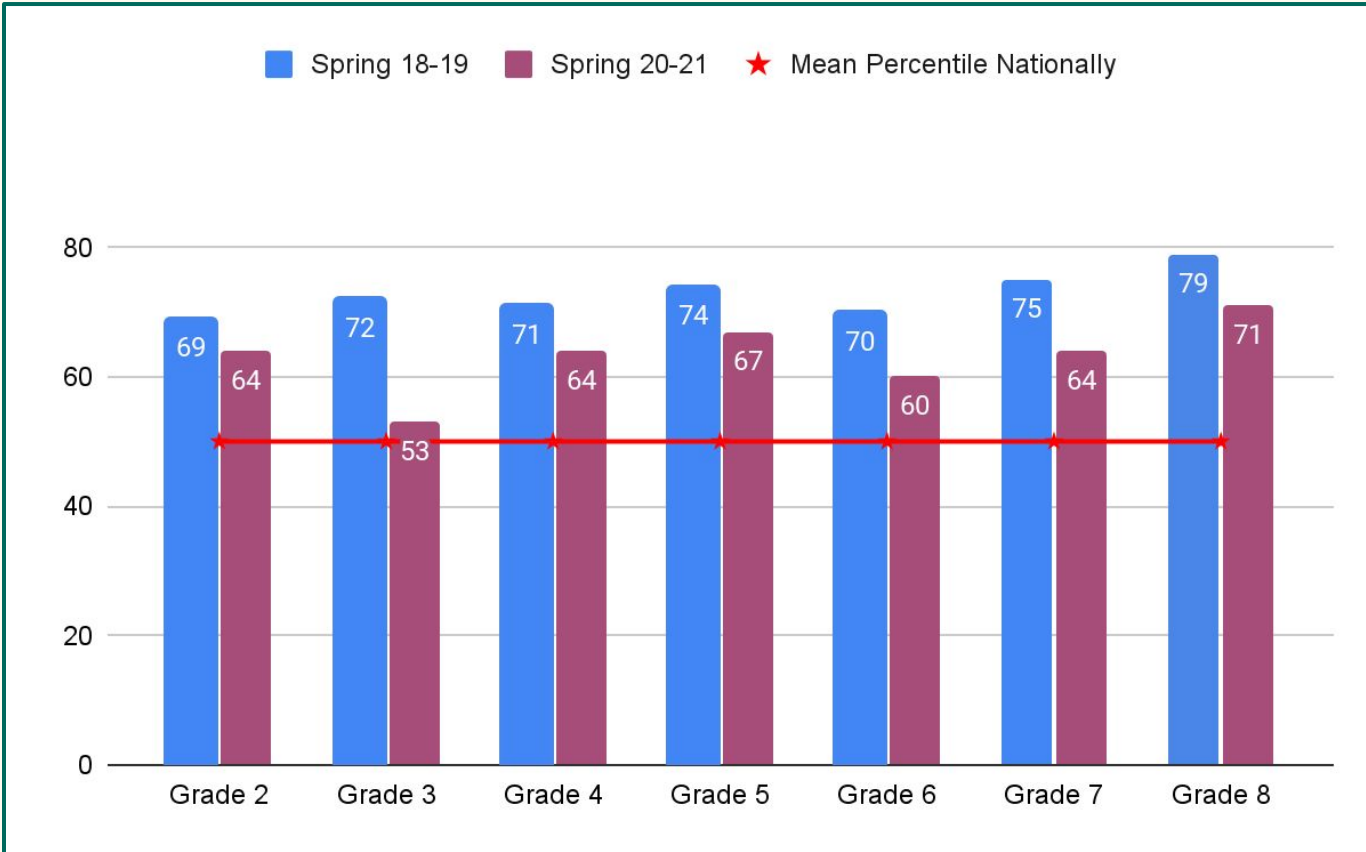
MAP Reading Percentile Scores - Spring 2019 to Spring 2021



Despite the pandemic, all grades are performing above the pre-pandemic national percentile mean

This information informs where we focus our intervention supports

MAP Math Percentile Scores - Spring 2019 to Spring 2021



Again, declines were noted but all grades are performing above the pre-pandemic national percentile mean

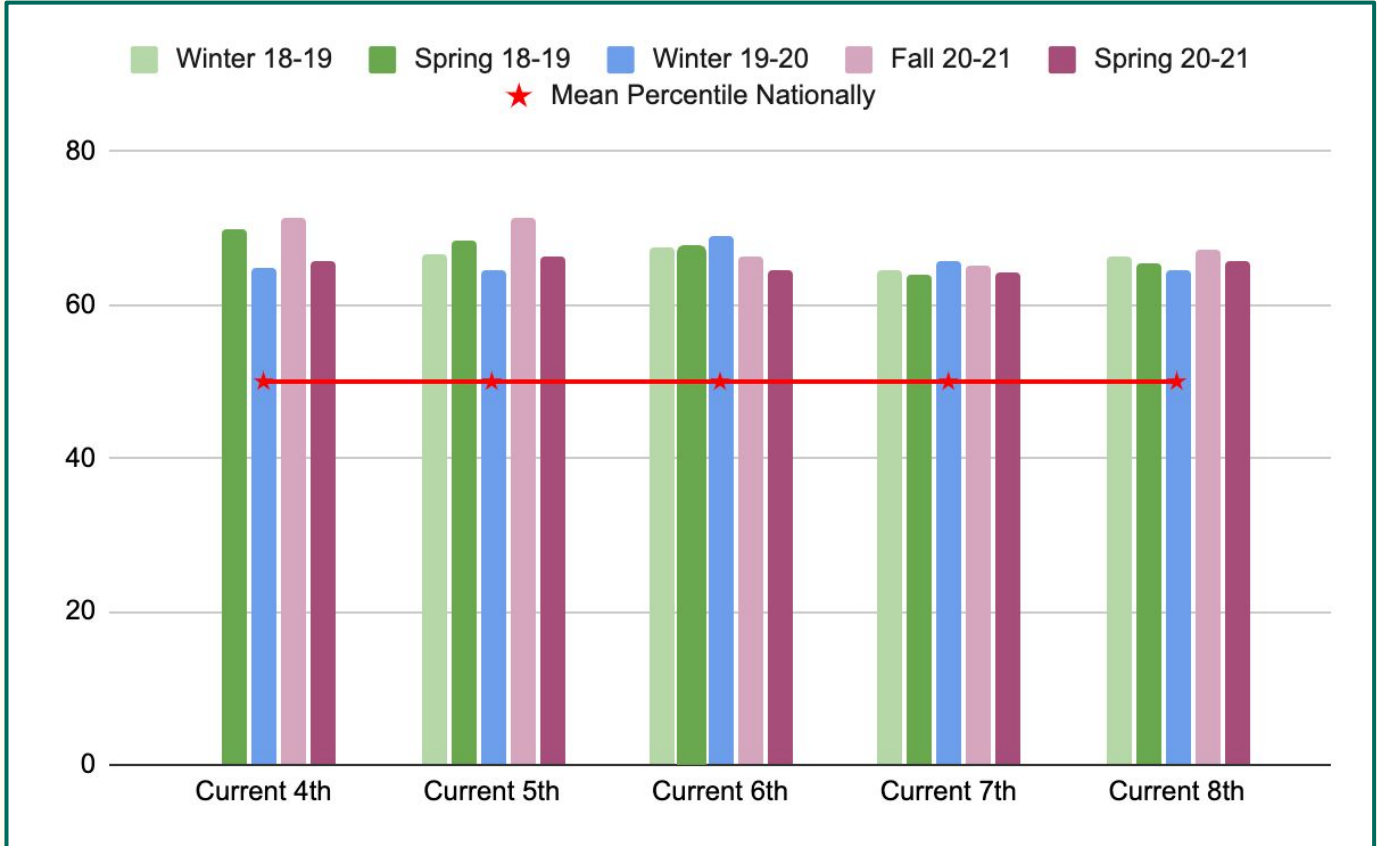
Greater decreases were noted in math versus reading

MAP Reading Percentile by Cohort

This follows grade-levels over 3 school-years

Scores fluctuate across testing seasons for the same group of students

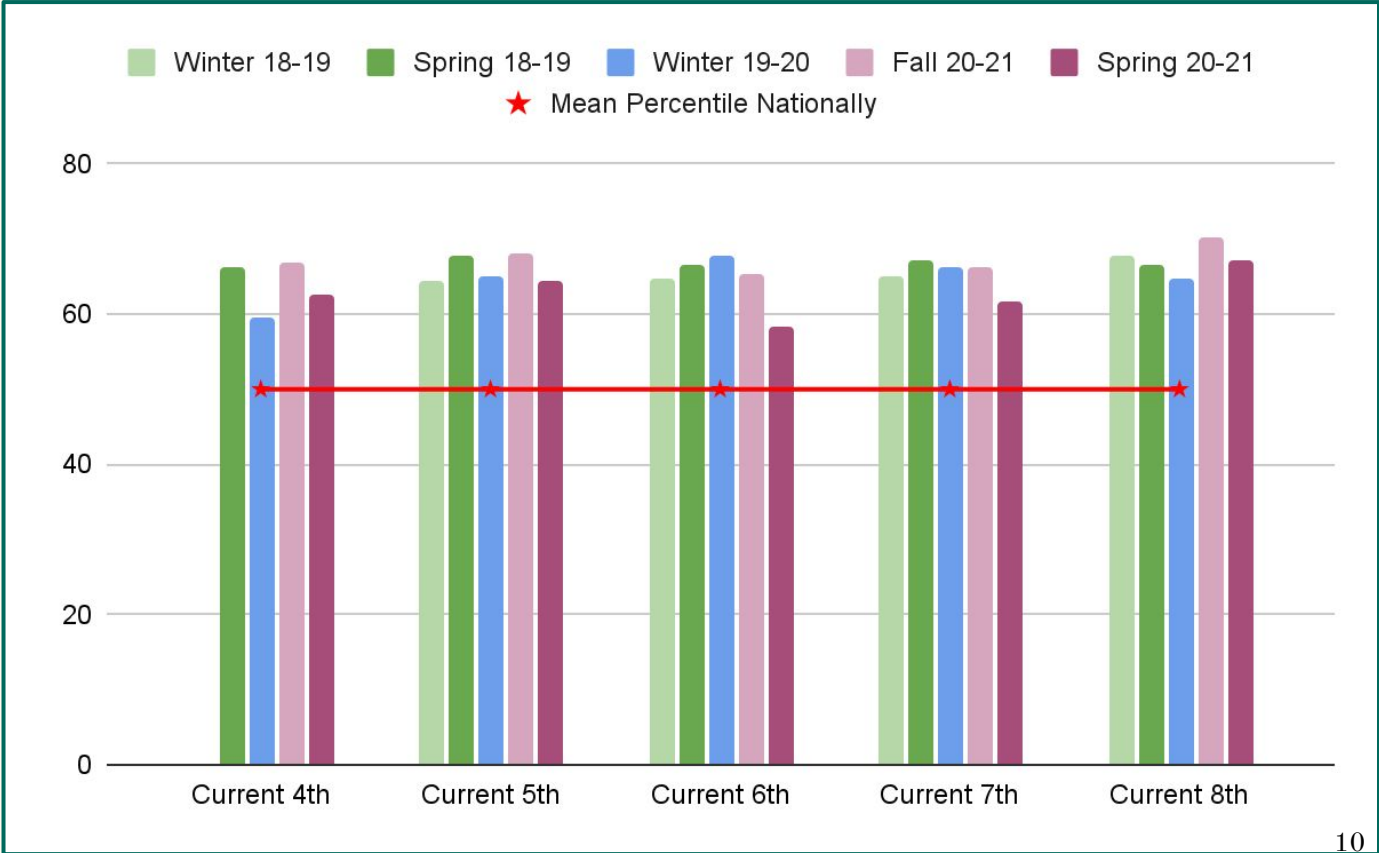
While some grades showed decline this spring, some showed improvements over pre-pandemic testing seasons

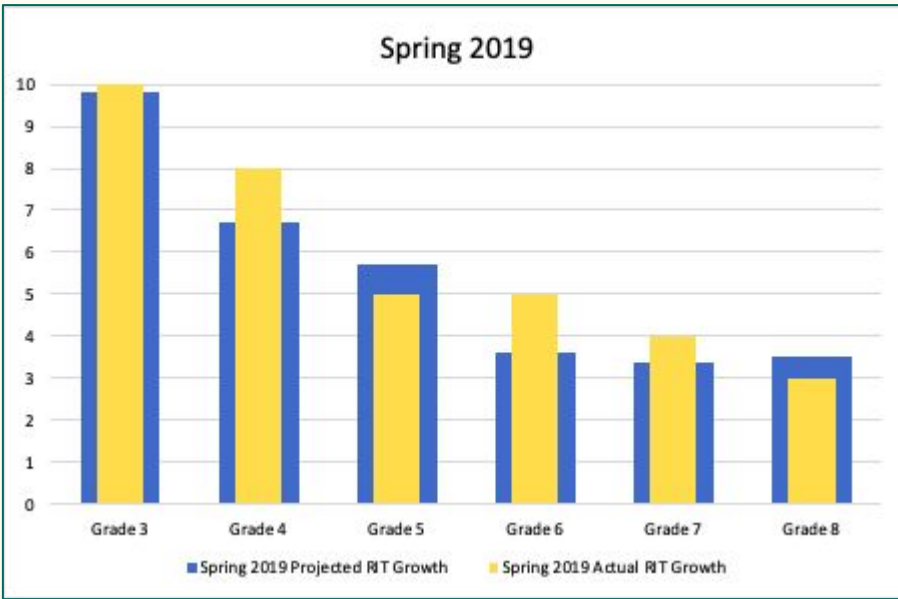


MAP Math Percentile by Cohort

Again, note the fluctuations across grades and seasons

As a cohort, our current 6th graders struggled the most in math

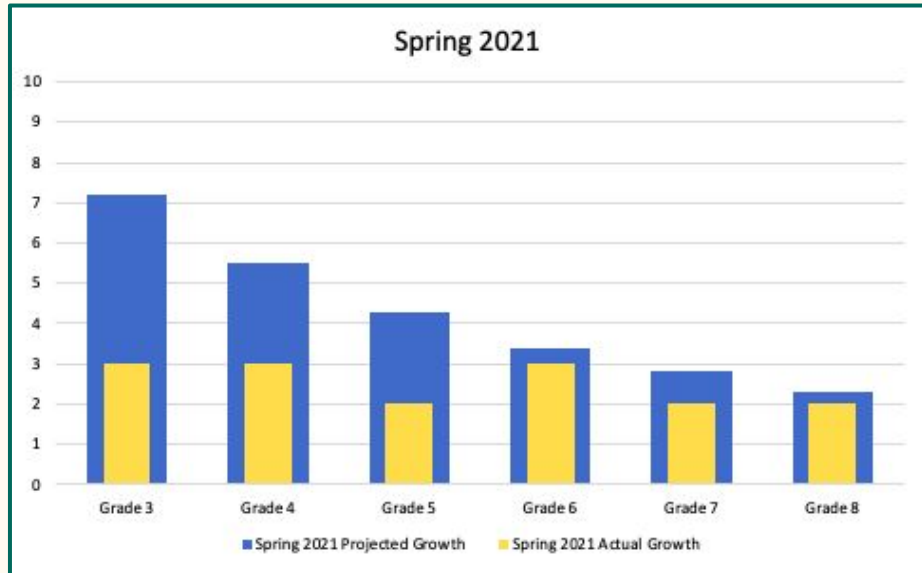


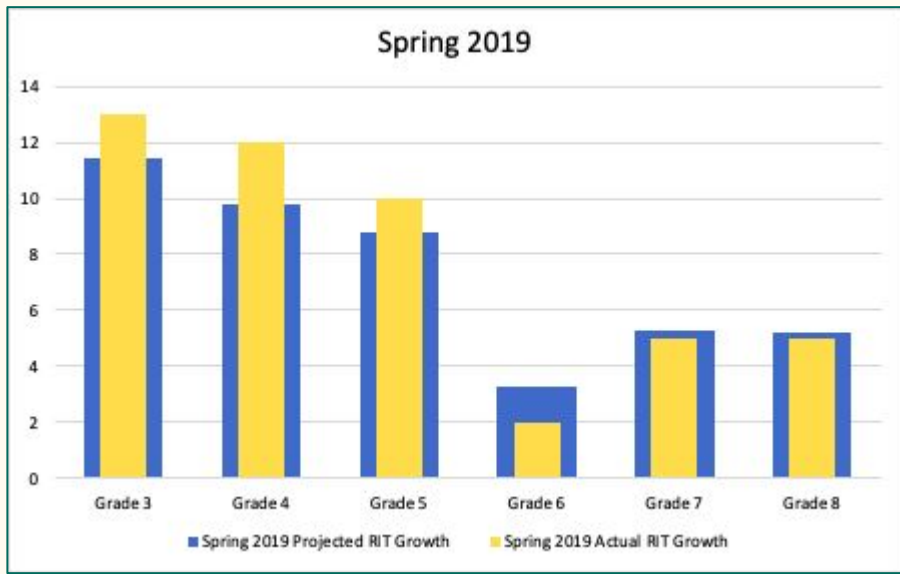


MAP Reading Projected RIT vs. Actual RIT Growth in Reading - Spring 2019 and 2021

All grades but 5th and 8th exceeded their projected reading growth in 2019, but no grades met their projected growth in 2021

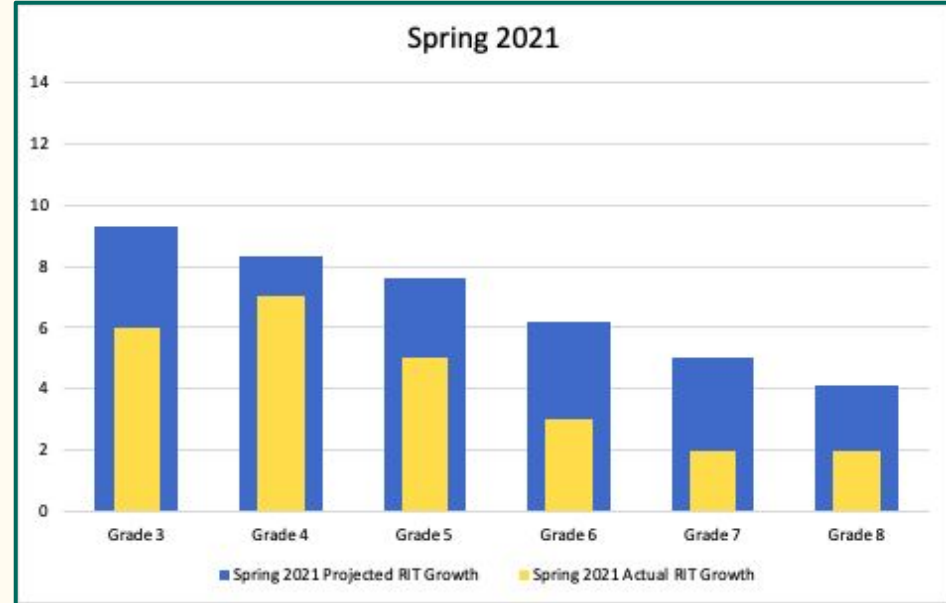
Inflated fall scores would impact students meeting spring 2021 growth





MAP Math Projected RIT vs. Actual RIT Growth in Reading - Spring 2019 and 2021

Elementary grades exceeded their projected math growth in 2019, but no grades met their projected growth in 2021



MAP Reading RIT Performance Remote versus In-Person

Grade	Fall 2020 RIT			Spring 2021 RIT			RIT Difference	
	In Person	Remote		In Person	Remote		In Person	Remote
3rd	199	204		202	203		+3	-1
4th	209	209		212	211		+3	+2
5th	216	219		218	220		+2	+1
6th	219	222		222	224		+3	+2
7th	223	221		225	223		+2	+2
8th	227	230		229	231		+2	+1

Over 20% of our remote students did not test in the Spring of 2021

There was a negligible difference between remote versus in-person students

On average, remote students gained 1.0 RIT points from fall to spring

On average, in-person students gained 2.5 RIT points from fall to spring

MAP Math RIT Performance Remote versus In-Person

Grade	Fall 2020 RIT		Spring 2021 RIT		RIT Difference	
	In Person	Remote	In Person	Remote	In Person	Remote
3rd	194	207	201	206	+7	-1
4th	208	214	215	218	+7	+4
5th	220	227	225	232	+5	+5
6th	223	230	226	230	+3	0
7th	231	230	233	230	+2	0
8th	239	239	241	240	+2	+1

There was a slight difference for remote students versus in-person students

On average, remote students gained 1.5 RIT points from fall to spring

On average, in-person students gained 4.5 RIT points from fall to spring

Looking Forward

- Literacy Footprints
- Math Toolkit
- Reviewing Curriculum Pacing and Sequence
- Additional 4.0 FTE Interventionists
- Tutoring
- Summer School
- RULER Student Implementation
- RTI/MTSS Framework
- MAP Data Analysis Refresher Training

Resources

Dorm, Emma et al. "COVID-19 and learning loss-disparities grow".

<https://www.mckinsey.com/industries/public-and-social-sector/our-insights/covid-19-and-learning-loss-disparities-grow-and-students-need-help#>

Fensterwald, John. "Early data on learning loss show big drop in math, but not reading skills".

<https://edsources.org/2020/early-data-on-learning-loss-show-big-drop-in-math-but-not-reading-skills/644416>.

Goldstein, Dana . *"Does It Hurt Children to Measure Pandemic Learning Loss?"*

<https://www.nytimes.com/2021/04/08/us/school-testing-education-covid.html>.

Kuhfeld, Megan et al. "Comparability analysis of remote and in-person MAP Growth testing in fall 2020".

<https://www.nwea.org/content/uploads/2020/11/Technical-brief-Comparability-analysis-of-remote-and-inperson-MAP-Growth-testing-in-fall-2020-NOV2020.pdf>.

Questions?